

Datasheet for ABIN954283  
**anti-PPRC1 antibody (C-Term)**

## 2 Images

[Go to Product page](#)

## Overview

Quantity:	0.4 mL
Target:	PPRC1
Binding Specificity:	AA 1636-1664, C-Term
Reactivity:	Human
Host:	Rabbit
Clonality:	Polyclonal
Conjugate:	This PPRC1 antibody is un-conjugated
Application:	Western Blotting (WB), Immunohistochemistry (Paraffin-embedded Sections) (IHC (p)), Enzyme Immunoassay (EIA)

## Product Details

Immunogen:	KLH conjugated synthetic peptide between 1636-1664 amino acids from the C-terminal region of Human PPRC1
Isotype:	Ig Fraction
Specificity:	This antibody recognizes Human PPRC1 (C-term).
Purification:	Affinity Chromatography on Protein A

## Target Details

Target:	PPRC1
Alternative Name:	PPRC1 ( <a href="#">PPRC1 Products</a> )

## Target Details

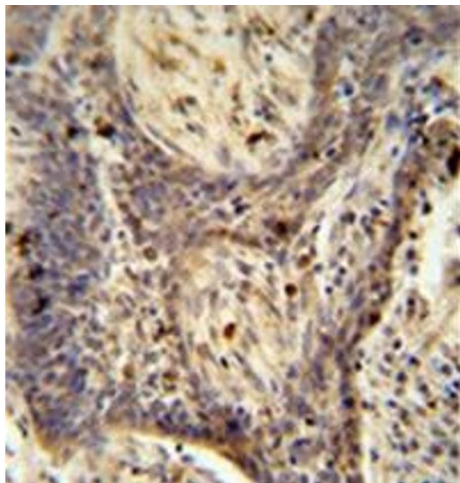
Background:	The protein encoded by this gene is similar to PPAR-gamma coactivator 1 (PPARGC1/PGC-1), a protein that can activate mitochondrial biogenesis in part through a direct interaction with nuclear respiratory factor 1 (NRF1). This protein has been shown to interact with NRF1. It is thought to be a functional relative of PPARGC1 that activates mitochondrial biogenesis through NRF1 in response to proliferative signals.Synonyms: KIAA0595, PGC-1-related coactivator, PRC, Peroxisome proliferator-activated receptor gamma coactivator-related protein 1
Molecular Weight:	177544 Da
Gene ID:	23082
NCBI Accession:	<a href="#">NP_055877</a>

## Application Details

Application Notes:	Optimal working dilution should be determined by the investigator.
Restrictions:	For Research Use only

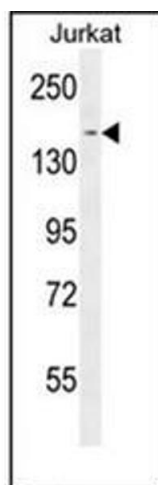
## Handling

Format:	Liquid
Concentration:	0.25 mg/mL
Buffer:	PBS containing 0.09 % (W/V) Sodium Azide as preservative
Preservative:	Sodium azide
Precaution of Use:	This product contains sodium azide: a POISONOUS AND HAZARDOUS SUBSTANCE which should be handled by trained staff only.
Handling Advice:	Avoid repeated freezing and thawing.
Storage:	4 °C/-20 °C
Storage Comment:	Store undiluted at 2-8 °C for one month or (in aliquots) at -20 °C for longer.



#### Immunohistochemistry (Paraffin-embedded Sections)

**Image 1.** Formalin fixed and paraffin embedded human lung carcinoma reacted with PPRC1 Antibody (C-term) followed by peroxidase conjugation of the secondary antibody and DAB staining.



#### Western Blotting

**Image 2.** Western blot analysis of PPRC1 Antibody (C-term) in Jurkat cell line lysates (35ug/lane). This demonstrates the PPRC1 antibody detected the PPRC1 protein (arrow).