

Datasheet for ABIN954284  
**anti-PQLC1 antibody (Middle Region)**

## 2 Images

[Go to Product page](#)

## Overview

Quantity:	0.4 mL
Target:	PQLC1
Binding Specificity:	AA 103-132, Middle Region
Reactivity:	Human, Mouse
Host:	Rabbit
Clonality:	Polyclonal
Conjugate:	This PQLC1 antibody is un-conjugated
Application:	Western Blotting (WB), Immunohistochemistry (Paraffin-embedded Sections) (IHC (p)), Enzyme Immunoassay (EIA)

## Product Details

Immunogen:	KLH conjugated synthetic peptide between 103-132 amino acids from the Central region of Human PQLC1
Isotype:	Ig Fraction
Specificity:	This antibody recognizes Human and Mouse PQLC1 (Center).
Purification:	Affinity Chromatography on Protein A

## Target Details

Target:	PQLC1
Alternative Name:	PQLC1 ( <a href="#">PQLC1 Products</a> )

## Target Details

Background:	Synonyms: FLJ22378, PQ-loop repeat-containing protein 1
Molecular Weight:	30478 Da
Gene ID:	80148
NCBI Accession:	<a href="#">NP_001139815</a>

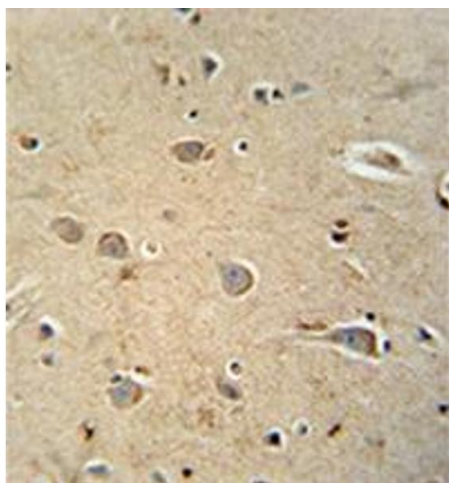
## Application Details

Application Notes:	Optimal working dilution should be determined by the investigator.
Restrictions:	For Research Use only

## Handling

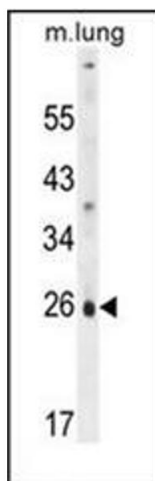
Format:	Liquid
Concentration:	0.25 mg/mL
Buffer:	PBS containing 0.09 % (W/V) Sodium Azide as preservative
Preservative:	Sodium azide
Precaution of Use:	This product contains sodium azide: a POISONOUS AND HAZARDOUS SUBSTANCE which should be handled by trained staff only.
Handling Advice:	Avoid repeated freezing and thawing.
Storage:	4 °C/-20 °C
Storage Comment:	Store undiluted at 2-8 °C for one month or (in aliquots) at -20 °C for longer.

## Images



### Immunohistochemistry (Paraffin-embedded Sections)

**Image 1.** Formalin fixed and paraffin embedded human brain tissue reacted with PQLC1 Antibody followed by peroxidase conjugation of the secondary antibody and DAB staining.



#### Western Blotting

**Image 2.** Western blot analysis of PQLC1 Antibody in mouse lung tissue lysates (35ug/lane). This demonstrates the PQLC1 antibody detected the PQLC1 protein (arrow).