



[Go to Product page](#)

Datasheet for ABIN954288

anti-PRAMEF2 antibody (C-Term)

1 Image

Overview

Quantity:	0.4 mL
Target:	PRAMEF2
Binding Specificity:	AA 387-417, C-Term
Reactivity:	Human
Host:	Rabbit
Clonality:	Polyclonal
Conjugate:	This PRAMEF2 antibody is un-conjugated
Application:	Western Blotting (WB), Enzyme Immunoassay (EIA)

Product Details

Immunogen:	KLH conjugated synthetic peptide between 387-417 amino acids from the C-terminal region of human PRAMEF2
Isotype:	Ig Fraction
Specificity:	This antibody reacts to PRAMEF2.
Cross-Reactivity (Details):	Species reactivity (tested):Human.
Purification:	Affinity chromatography on Protein A

Target Details

Target:	PRAMEF2
Alternative Name:	PRAMEF2 (PRAMEF2 Products)

Target Details

Background: Synonyms: PRAME family member 2

Molecular Weight: 54872 Da

Gene ID: 65122

NCBI Accession: [NP_075390](#)

Application Details

Application Notes: Optimal working dilution should be determined by the investigator.

Restrictions: For Research Use only

Handling

Format: Liquid

Concentration: 0.25 mg/mL

Buffer: PBS, 0.09 % (W/V) sodium azide

Preservative: Sodium azide

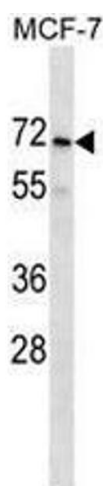
Precaution of Use: This product contains sodium azide: a POISONOUS AND HAZARDOUS SUBSTANCE which should be handled by trained staff only.

Handling Advice: Avoid repeated freezing and thawing.

Storage: 4 °C/-20 °C

Storage Comment: Store the antibody undiluted at 2-8 °C for one month or (in aliquots) at -20 °C for longer.

Validation report #100923 for Western Blotting (WB)



Western Blotting

Image 1. PRAMEF2 Antibody (C-term) western blot analysis in MCF-7 cell line lysates (35µg/lane). This demonstrates the PRAMEF2 antibody detected the PRAMEF2 protein (arrow).