



Datasheet for ABIN954291
anti-PRAMEF6 antibody (C-Term)



[Go to Product page](#)

3 Images

Overview

Quantity:	0.4 mL
Target:	PRAMEF6
Binding Specificity:	AA 402-431, C-Term
Reactivity:	Human
Host:	Rabbit
Clonality:	Polyclonal
Conjugate:	This PRAMEF6 antibody is un-conjugated
Application:	Western Blotting (WB), Immunofluorescence (IF), Enzyme Immunoassay (EIA)

Product Details

Immunogen:	KLH conjugated synthetic peptide between 402-431 amino acids from the C-terminal region of human PRAMEF6
Isotype:	Ig Fraction
Specificity:	This antibody reacts to PRAMEF6.
Cross-Reactivity (Details):	Species reactivity (tested):Human.
Purification:	Affinity chromatography on Protein A

Target Details

Target:	PRAMEF6
Alternative Name:	PRAMEF6 (PRAMEF6 Products)

Target Details

Background: Synonyms: PRAME family member 6

Gene ID: 440561

NCBI Accession: [NP_001010889](#)

Application Details

Application Notes: Optimal working dilution should be determined by the investigator.

Restrictions: For Research Use only

Handling

Format: Liquid

Concentration: 0.25 mg/mL

Buffer: PBS, 0.09 % (W/V) sodium azide

Preservative: Sodium azide

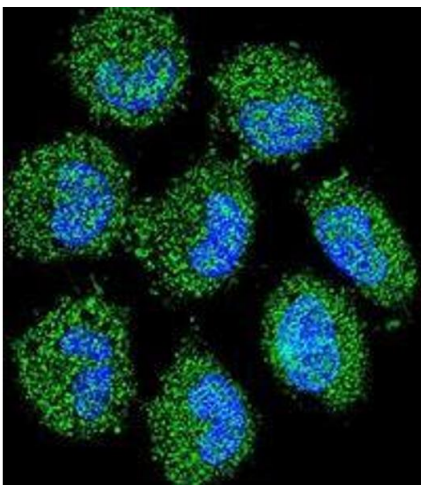
Precaution of Use: This product contains sodium azide: a POISONOUS AND HAZARDOUS SUBSTANCE which should be handled by trained staff only.

Handling Advice: Avoid repeated freezing and thawing.

Storage: 4 °C/-20 °C

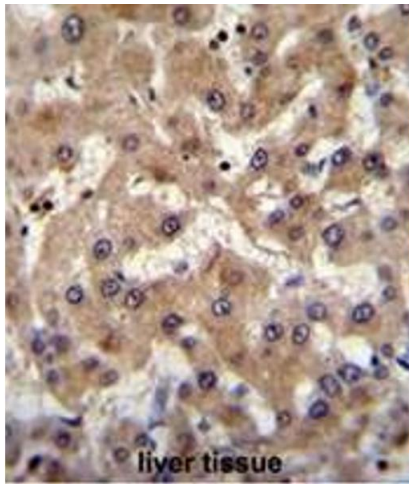
Storage Comment: Store the antibody undiluted at 2-8 °C for one month or (in aliquots) at -20 °C for longer.

Images



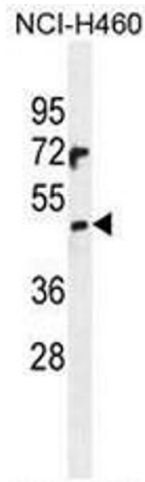
Immunofluorescence

Image 1. Confocal immunofluorescent analysis of PRAMEF6 Antibody (C-term)(Cat#AP53435PU-N) with NCI-H460 cell followed by Alexa Fluor 488-conjugated goat anti-rabbit IgG (green). DAPI was used to stain the cell nuclear (blue).



Immunohistochemistry (Paraffin-embedded Sections)

Image 2. PRAMEF6 Antibody (C-term) immunohistochemistry analysis in formalin fixed and paraffin embedded human liver tissue followed by peroxidase conjugation of the secondary antibody and DAB staining. This data demonstrates the use of PRAMEF6 Antibody (C-term) for immunohistochemistry. Clinical relevance has not been evaluated.



Western Blotting

Image 3. PRAMEF6 Antibody (C-term) western blot analysis in NCI-H460 cell line lysates (35µg/lane). This demonstrates the PRAMEF6 antibody detected the PRAMEF6 protein (arrow).