

Datasheet for ABIN954292  
**anti-PRAMEF8 antibody (C-Term)**



[Go to Product page](#)

3 Images

### Overview

Quantity:	0.4 mL
Target:	PRAMEF8
Binding Specificity:	AA 417-447, C-Term
Reactivity:	Human
Host:	Rabbit
Clonality:	Polyclonal
Conjugate:	This PRAMEF8 antibody is un-conjugated
Application:	Western Blotting (WB), Enzyme Immunoassay (EIA)

### Product Details

Immunogen:	KLH conjugated synthetic peptide between 417-447 amino acids from the C-terminal region of human PRAMEF8
Isotype:	Ig Fraction
Specificity:	This antibody reacts to PRAMEF8.
Cross-Reactivity (Details):	Species reactivity (tested):Human.
Purification:	Affinity chromatography on Protein A

### Target Details

Target:	PRAMEF8
Alternative Name:	PRAMEF8 ( <a href="#">PRAMEF8 Products</a> )

## Target Details

Background: Synonyms: PRAME family member 8

Molecular Weight: 53669 Da

Gene ID: 391002

NCBI Accession: [NP\\_001012276](#)

## Application Details

Application Notes: Optimal working dilution should be determined by the investigator.

Restrictions: For Research Use only

## Handling

Format: Liquid

Concentration: 0.25 mg/mL

Buffer: PBS, 0.09 % (W/V) sodium azide

Preservative: Sodium azide

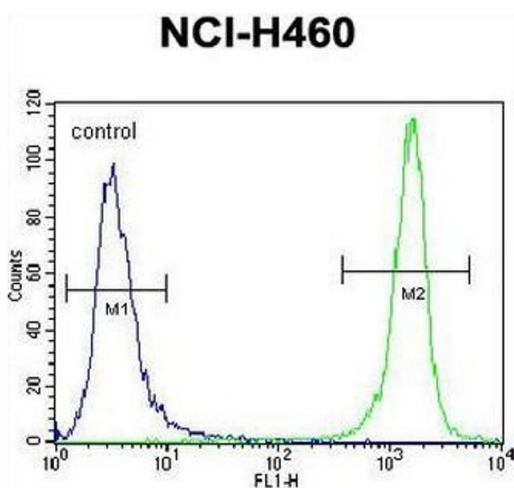
Precaution of Use: This product contains sodium azide: a POISONOUS AND HAZARDOUS SUBSTANCE which should be handled by trained staff only.

Handling Advice: Avoid repeated freezing and thawing.

Storage: 4 °C/-20 °C

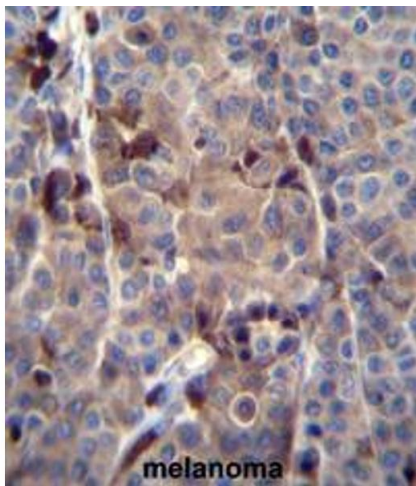
Storage Comment: Store the antibody undiluted at 2-8 °C for one month or (in aliquots) at -20 °C for longer.

## Images



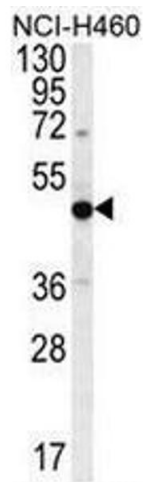
### Flow Cytometry

**Image 1.** PRAMEF8 Antibody (C-term) flow cytometric analysis of NCI-H460 cells (right histogram) compared to a negative control cell (left histogram). FITC-conjugated goat-anti-rabbit secondary antibodies were used for the analysis.



### Immunohistochemistry (Paraffin-embedded Sections)

**Image 2.** PRAMEF8 Antibody (C-term) immunohistochemistry analysis in formalin fixed and paraffin embedded human melanoma tissue followed by peroxidase conjugation of the secondary antibody and DAB staining. This data demonstrates the use of PRAMEF8 Antibody (C-term) for immunohistochemistry. Clinical relevance has not been evaluated.



### Western Blotting

**Image 3.** PRAMEF8 Antibody (C-term) western blot analysis in NCI-H460 cell line lysates (35µg/lane). This demonstrates the PRAMEF8 antibody detected the PRAMEF8 protein (arrow).