

Datasheet for ABIN954297  
**anti-PREX1 antibody (C-Term)**[Go to Product page](#)

## 3 Images

## Overview

Quantity:	0.4 mL
Target:	PREX1
Binding Specificity:	AA 1133-1163, C-Term
Reactivity:	Human
Host:	Rabbit
Clonality:	Polyclonal
Conjugate:	This PREX1 antibody is un-conjugated
Application:	Western Blotting (WB), Enzyme Immunoassay (EIA)

## Product Details

Immunogen:	KLH conjugated synthetic peptide between 1133-1163 amino acids from the C-terminal region of human PREX1
Isotype:	Ig Fraction
Specificity:	This antibody reacts to PREX1.
Cross-Reactivity (Details):	Species reactivity (tested):Human.
Purification:	Affinity chromatography on Protein A

## Target Details

Target:	PREX1
Alternative Name:	PREX1 ( <a href="#">PREX1 Products</a> )

## Target Details

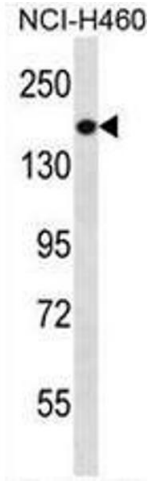
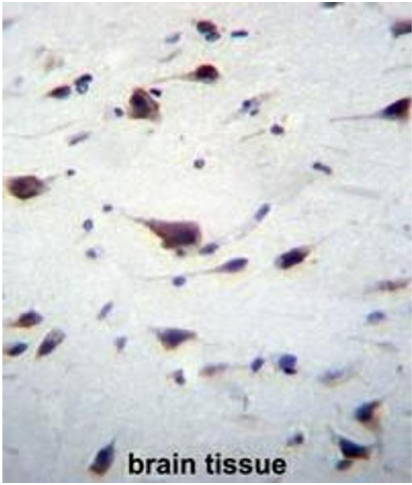
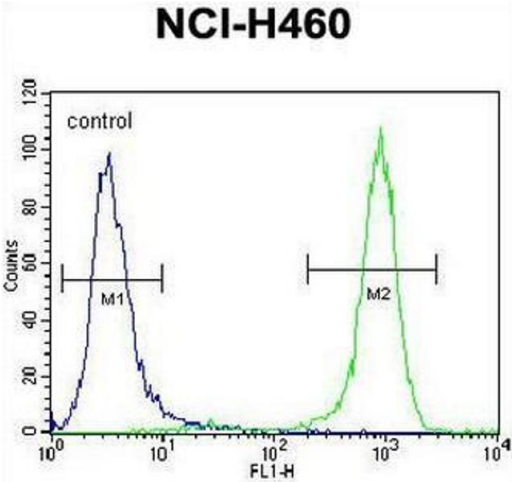
Background:	The protein encoded by this gene acts as a guanine nucleotide exchange factor for the RHO family of small GTP-binding proteins (RACs). It has been shown to bind to and activate RAC1 by exchanging bound GDP for free GTP. The encoded protein, which is found mainly in the cytoplasm, is activated by phosphatidylinositol-3,4,5-trisphosphate and the beta-gamma subunits of heterotrimeric G proteins. Synonyms: 4, 5)-dependent Rac exchanger 1, 5-trisphosphate-dependent Rac exchanger 1 protein, KIAA1415, P-Rex1, Phosphatidylinositol 3, PtdIns(3
Molecular Weight:	186203 Da
Gene ID:	57580
NCBI Accession:	<a href="#">NP_065871</a>
Pathways:	<a href="#">Regulation of Actin Filament Polymerization</a>

## Application Details

Application Notes:	Optimal working dilution should be determined by the investigator.
Restrictions:	For Research Use only

## Handling

Format:	Liquid
Concentration:	0.25 mg/mL
Buffer:	PBS, 0.09 % (W/V) sodium azide
Preservative:	Sodium azide
Precaution of Use:	This product contains sodium azide: a POISONOUS AND HAZARDOUS SUBSTANCE which should be handled by trained staff only.
Handling Advice:	Avoid repeated freezing and thawing.
Storage:	4 °C/-20 °C
Storage Comment:	Store the antibody undiluted at 2-8 °C for one month or (in aliquots) at -20 °C for longer.



### Flow Cytometry

**Image 1.** PREX1 Antibody (C-term) flow cytometric analysis of NCI-H460 cells (right histogram) compared to a negative control cell (left histogram). FITC-conjugated goat-anti-rabbit secondary antibodies were used for the analysis.

### Immunohistochemistry (Paraffin-embedded Sections)

**Image 2.** PREX1 Antibody (C-term) immunohistochemistry analysis in formalin fixed and paraffin embedded human brain tissue followed by peroxidase conjugation of the secondary antibody and DAB staining. This data demonstrates the use of PREX1 Antibody (C-term) for immunohistochemistry. Clinical relevance has not been evaluated.

### Western Blotting

**Image 3.** PREX1 Antibody (C-term) western blot analysis in NCI-H460 cell line lysates (35µg/lane). This demonstrates the PREX1 antibody detected the PREX1 protein (arrow).