



Datasheet for ABIN954319  
**anti-PPM1H antibody (Middle Region)**



[Go to Product page](#)

3 Images

Overview

Quantity:	0.4 mL
Target:	PPM1H
Binding Specificity:	AA 242-271, Middle Region
Reactivity:	Human, Mouse
Host:	Rabbit
Clonality:	Polyclonal
Conjugate:	This PPM1H antibody is un-conjugated
Application:	Western Blotting (WB), Flow Cytometry (FACS), Immunohistochemistry (Paraffin-embedded Sections) (IHC (p)), Enzyme Immunoassay (EIA)

Product Details

Immunogen:	KLH conjugated synthetic peptide between 242~271 amino acids from the Central region of Human PPM1H
Isotype:	Ig Fraction
Specificity:	This antibody recognizes Human PPM1H (Center).
Purification:	Affinity Chromatography on Protein A

Target Details

Target:	PPM1H
Alternative Name:	Protein Phosphatase 1H / PPM1H ( <a href="#">PPM1H Products</a> )

## Target Details

Background: Synonyms: ARHCL1, KIAA1157

Molecular Weight: 56448 Da

Gene ID: 57460

NCBI Accession: [NP\\_065751](#)

## Application Details

Application Notes: Optimal working dilution should be determined by the investigator.

Restrictions: For Research Use only

## Handling

Format: Liquid

Concentration: 0.25 mg/mL

Buffer: PBS containing 0.09 % (W/V) Sodium Azide as preservative

Preservative: Sodium azide

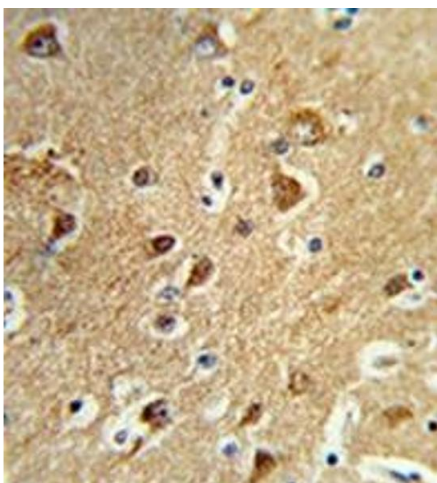
Precaution of Use: This product contains sodium azide: a POISONOUS AND HAZARDOUS SUBSTANCE which should be handled by trained staff only.

Handling Advice: Avoid repeated freezing and thawing.

Storage: 4 °C/-20 °C

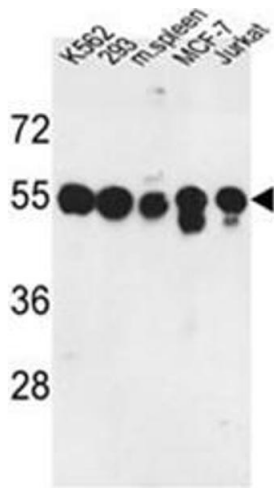
Storage Comment: Store undiluted at 2-8 °C for one month or (in aliquots) at -20 °C for longer.

## Images



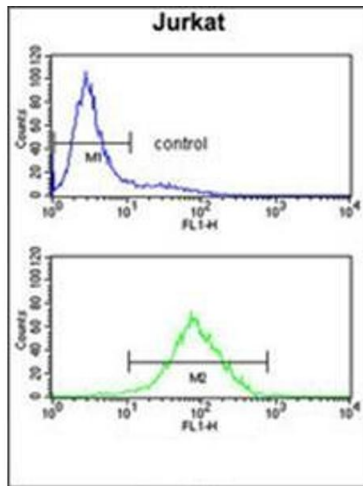
### Immunohistochemistry (Paraffin-embedded Sections)

**Image 1.** Formalin-fixed and paraffin-embedded human brain tissue reacted with PPM1H Antibody, which was peroxidase-conjugated to the secondary antibody, followed by DAB staining.



### Western Blotting

**Image 2.** Western blot analysis of PPM1H Antibody in K562, 293, MCF-7, Jurkat cell line and mouse spleen tissue lysates (35ug/lane). PPM1H (arrow) was detected using the purified Pab.



### Flow Cytometry

**Image 3.** Flow cytometry analysis of Jurkat cells using PPM1H Antibody (bottom histogram) compared to a negative control cell (top histogram). FITC-conjugated goat-anti-rabbit secondary antibodies were used for the analysis.