

Datasheet for ABIN954320
anti-PPM1L antibody (C-Term)

2 Images

[Go to Product page](#)

Overview

Quantity:	0.4 mL
Target:	PPM1L
Binding Specificity:	AA 215-244, C-Term
Reactivity:	Human, Mouse
Host:	Rabbit
Clonality:	Polyclonal
Application:	Western Blotting (WB), Immunohistochemistry (Paraffin-embedded Sections) (IHC (p)), Enzyme Immunoassay (EIA)

Product Details

Immunogen:	KLH conjugated synthetic peptide between 215-244 amino acids from the C-terminal region of Human PPM1L
Isotype:	Ig Fraction
Specificity:	This antibody recognizes Human and Mouse PPM1L (C-term).
Purification:	Affinity Chromatography on Protein A

Target Details

Target:	PPM1L
Alternative Name:	Protein Phosphatase 1L / PPM1L (PPM1L Products)
Background:	PPM1L, or PP2CE, belongs to the PP2C group of serine/threonine phosphatases, which are distinguished from other phosphatases by their structure, absolute requirement for Mg(2+) or

Target Details

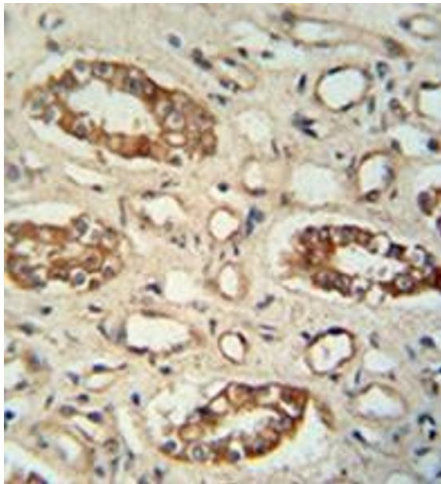
	Mn(2+), and insensitivity to okadaic acid. PP2Cs regulate stress-activated protein kinase (SAPK, see MIM 601158) signaling cascades that respond to extracellular stimuli (Jin et al., 2004 [PubMed 15560375]).Synonyms: PP2C-epsilon, PP2CE, Protein phosphatase 1-like, Protein phosphatase 2C isoform epsilon
Molecular Weight:	41053 Da
Gene ID:	151742
NCBI Accession:	NP_640338

Application Details

Application Notes:	Optimal working dilution should be determined by the investigator.
Restrictions:	For Research Use only

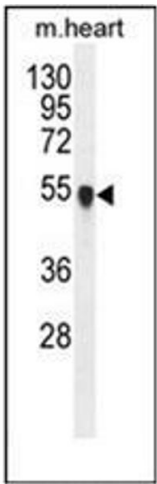
Handling

Format:	Liquid
Concentration:	0.25 mg/mL
Buffer:	PBS containing 0.09 % (W/V) Sodium Azide as preservative
Preservative:	Sodium azide
Precaution of Use:	This product contains sodium azide: a POISONOUS AND HAZARDOUS SUBSTANCE which should be handled by trained staff only.
Handling Advice:	Avoid repeated freezing and thawing.
Storage:	4 °C/-20 °C
Storage Comment:	Store undiluted at 2-8 °C for one month or (in aliquots) at -20 °C for longer.



Immunohistochemistry (Paraffin-embedded Sections)

Image 1. Formalin fixed and paraffin embedded human lung tissue reacted with PPM1L Antibody (C-term) followed by peroxidase conjugation of the secondary antibody and DAB staining.



Western Blotting

Image 2. Western blot analysis of PPM1L Antibody (C-term) in mouse heart tissue lysates (35ug/lane). This demonstrates the PPM1L antibody detected the PPM1L protein (arrow).