

Datasheet for ABIN954325
anti-PROX2 antibody (C-Term)

2 Images



[Go to Product page](#)

Overview

Quantity:	0.4 mL
Target:	PROX2
Binding Specificity:	AA 510-540, C-Term
Reactivity:	Human
Host:	Rabbit
Clonality:	Polyclonal
Conjugate:	This PROX2 antibody is un-conjugated
Application:	Western Blotting (WB), Enzyme Immunoassay (EIA)

Product Details

Immunogen:	KLH conjugated synthetic peptide between 510-540 amino acids from the C-terminal region of human PROX2
Isotype:	Ig Fraction
Specificity:	This antibody reacts to PROX2.
Cross-Reactivity (Details):	Species reactivity (tested):Human.
Purification:	Affinity chromatography on Protein A

Target Details

Target:	PROX2
Alternative Name:	PROX2 (PROX2 Products)

Target Details

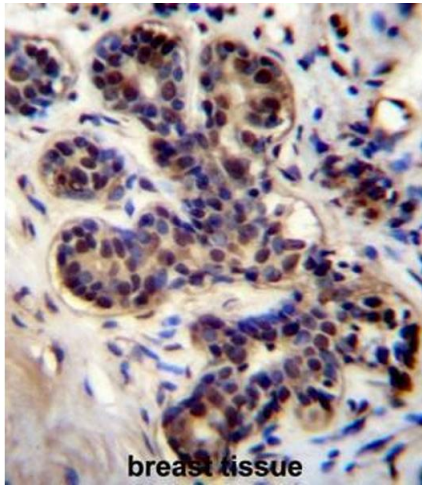
Background:	PROX2 is a transcription regulator. Does not seem to be essential for embryonic development and postnatal survival (By similarity).Synonyms: Prospero homeobox protein 2
Molecular Weight:	41kd Isoform 2. 65586 Da
Gene ID:	283571
NCBI Accession:	NP_001073877

Application Details

Application Notes:	Optimal working dilution should be determined by the investigator.
Restrictions:	For Research Use only

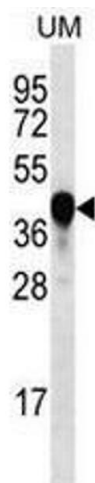
Handling

Format:	Liquid
Concentration:	0.25 mg/mL
Buffer:	PBS, 0.09 % (W/V) sodium azide
Preservative:	Sodium azide
Precaution of Use:	This product contains sodium azide: a POISONOUS AND HAZARDOUS SUBSTANCE which should be handled by trained staff only.
Handling Advice:	Avoid repeated freezing and thawing.
Storage:	4 °C/-20 °C
Storage Comment:	Store the antibody undiluted at 2-8 °C for one month or (in aliquots) at -20 °C for longer.



Immunohistochemistry (Paraffin-embedded Sections)

Image 1. PROX2 Antibody (C-term) immunohistochemistry analysis in formalin fixed and paraffin embedded human breast tissue followed by peroxidase conjugation of the secondary antibody and DAB staining. This data demonstrates the use of PROX2 Antibody (C-term) for immunohistochemistry. Clinical relevance has not been evaluated.



Western Blotting

Image 2. PROX2 Antibody (C-term) western blot analysis in UM cell line lysates (35µg/lane). This demonstrates the PROX2 antibody detected the PROX2 protein (arrow).