

Datasheet for ABIN954329
anti-PRPS2 antibody (Middle Region)[Go to Product page](#)

2 Images

Overview

| | |
|----------------------|---|
| Quantity: | 0.4 mL |
| Target: | PRPS2 |
| Binding Specificity: | AA 76-106, Middle Region |
| Reactivity: | Human |
| Host: | Rabbit |
| Clonality: | Polyclonal |
| Conjugate: | This PRPS2 antibody is un-conjugated |
| Application: | Western Blotting (WB), Enzyme Immunoassay (EIA) |

Product Details

| | |
|-----------------------------|--|
| Immunogen: | KLH conjugated synthetic peptide between 76-106 amino acids from the Central region of human PRPS2 |
| Isotype: | Ig Fraction |
| Specificity: | This antibody reacts to PRPS2. |
| Cross-Reactivity (Details): | Species reactivity (tested):Human. |
| Purification: | Affinity chromatography on Protein A |

Target Details

| | |
|-------------------|--|
| Target: | PRPS2 |
| Alternative Name: | PRPS2 (PRPS2 Products) |

Target Details

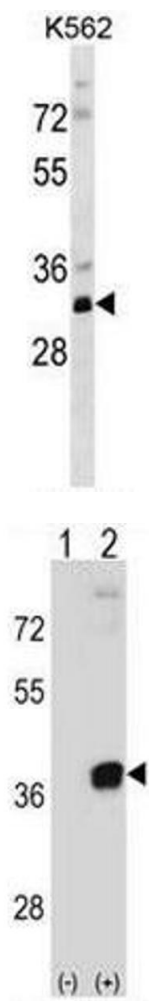
| | |
|-------------------|--|
| Background: | PRPS2 is a phosphoribosyl pyrophosphate synthetase that plays a central role in the synthesis of purines and pyrimidines. The encoded protein catalyzes the synthesis of 5-phosphoribosyl 1-pyrophosphate from ATP and D-ribose 5-phosphate. Alternate splicing results in multiple transcript variants.Synonyms: PPRibP, PRS-II, Phosphoribosyl pyrophosphate synthase II, Ribose-phosphate pyrophosphokinase 2 |
| Molecular Weight: | 34769 Da |
| Gene ID: | 5634 |
| NCBI Accession: | NP_001034180 |
| Pathways: | Ribonucleoside Biosynthetic Process |

Application Details

| | |
|--------------------|--|
| Application Notes: | Optimal working dilution should be determined by the investigator. |
| Restrictions: | For Research Use only |

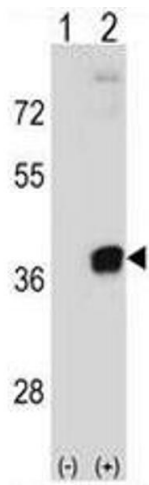
Handling

| | |
|--------------------|--|
| Format: | Liquid |
| Concentration: | 0.25 mg/mL |
| Buffer: | PBS, 0.09 % (W/V) sodium azide |
| Preservative: | Sodium azide |
| Precaution of Use: | This product contains sodium azide: a POISONOUS AND HAZARDOUS SUBSTANCE which should be handled by trained staff only. |
| Handling Advice: | Avoid repeated freezing and thawing. |
| Storage: | 4 °C/-20 °C |
| Storage Comment: | Store the antibody undiluted at 2-8 °C for one month or (in aliquots) at -20 °C for longer. |



Western Blotting

Image 1. PRPS2 Antibody (Center) western blot analysis in K562 cell line lysates (35µg/lane). This demonstrates the PRPS2 antibody detected the PRPS2 protein (arrow).



Western Blotting

Image 2. Western blot analysis of PRPS2 (arrow) using rabbit polyclonal PRPS2 Antibody (Center) . 293 cell lysates (2 µg/lane) either nontransfected (Lane 1) or transiently transfected (Lane 2) with the PRPS2 gene.