



[Go to Product page](#)

Datasheet for ABIN954334
anti-PRR7 antibody (C-Term)

1 Image

Overview

Quantity:	0.4 mL
Target:	PRR7
Binding Specificity:	AA 170-199, C-Term
Reactivity:	Human
Host:	Rabbit
Clonality:	Polyclonal
Conjugate:	This PRR7 antibody is un-conjugated
Application:	Western Blotting (WB), Enzyme Immunoassay (EIA)

Product Details

Immunogen:	Synthetic peptide - KLH conjugated - corresponding to the C-terminal region (between 170-199aa) of human PRR7.
Isotype:	Ig Fraction
Specificity:	This antibody detects human PRR7 at C-term.
Cross-Reactivity (Details):	Species reactivity (tested):Human
Purification:	Purified through a protein A column; followed by peptide affinity purification.

Target Details

Target:	PRR7
Alternative Name:	PRR7 (PRR7 Products)

Target Details

Background: Found in a postsynaptic membrane complex with DLG4 and GRIN1. Interacts with DLG4. Interacts preferentially to the PDZ3 domain of DLG4 and to lesser degree to PDZ2 but not to the PDZ1. Synonyms: Proline-rich protein 7, Synaptic proline-rich membrane protein

Gene ID: 80758

NCBI Accession: [NP_085044](#)

Application Details

Application Notes: Optimal working dilution should be determined by the investigator.

Restrictions: For Research Use only

Handling

Format: Liquid

Concentration: 0.25 mg/mL

Buffer: PBS with 0.09 % (W/V) Sodium Azide.

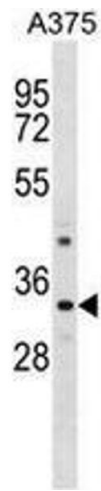
Preservative: Sodium azide

Precaution of Use: This product contains sodium azide: a POISONOUS AND HAZARDOUS SUBSTANCE which should be handled by trained staff only.

Handling Advice: Avoid repeated freezing and thawing.

Storage: 4 °C/-20 °C

Storage Comment: Store the antibody undiluted at 2-8 °C for one month or (in aliquots) at -20 °C for longer.



Western Blotting

Image 1. Western blot analysis in A375 cell line lysates (35ug/lane) using PRR7 Antibody (C-term). This demonstrates the PRR7 antibody detected the PRR7 protein (arrow).