



[Go to Product page](#)

Datasheet for ABIN954336

## anti-PRRT1 antibody (Middle Region)

### 2 Images

#### Overview

Quantity:	0.4 mL
Target:	PRRT1
Binding Specificity:	AA 247-277, Middle Region
Reactivity:	Human
Host:	Rabbit
Clonality:	Polyclonal
Conjugate:	This PRRT1 antibody is un-conjugated
Application:	Western Blotting (WB), Flow Cytometry (FACS), Enzyme Immunoassay (EIA)

#### Product Details

Immunogen:	Synthetic peptide - KLH conjugated - corresponding to the central region (between 247-277aa) of human PRRT1.
Isotype:	Ig Fraction
Specificity:	This antibody detects human PRRT1.
Cross-Reactivity (Details):	Species reactivity (tested):Human
Purification:	Purified through a protein A column; followed by peptide affinity purification.

#### Target Details

Target:	PRRT1
Alternative Name:	PRRT1 ( <a href="#">PRRT1 Products</a> )

## Target Details

Background: Synonyms: C6orf31, NG5, Proline-rich transmembrane protein 1

Gene ID: 80863

NCBI Accession: [NP\\_085154](#)

## Application Details

Application Notes: Optimal working dilution should be determined by the investigator.

Restrictions: For Research Use only

## Handling

Format: Liquid

Concentration: 0.25 mg/mL

Buffer: PBS with 0.09 % (W/V) Sodium Azide.

Preservative: Sodium azide

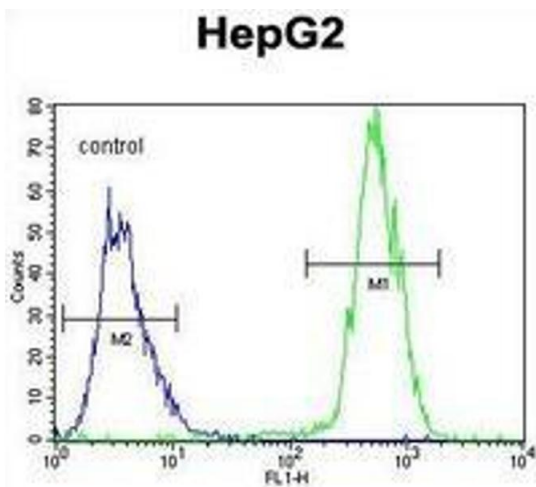
Precaution of Use: This product contains sodium azide: a POISONOUS AND HAZARDOUS SUBSTANCE which should be handled by trained staff only.

Handling Advice: Avoid repeated freezing and thawing.

Storage: 4 °C/-20 °C

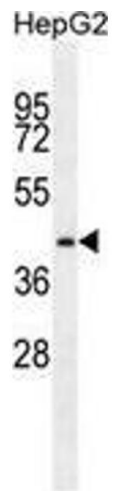
Storage Comment: Store the antibody undiluted at 2-8 °C for one month or (in aliquots) at -20 °C for longer.

## Images



### Flow Cytometry

**Image 1.** Flow cytometric analysis of HepG2 cells (right histogram) compared to a negative control cell (left histogram) using PRRT1 Antibody , followedf by FITC-conjugated goat-anti-rabbit secondary antibodies.



### Western Blotting

**Image 2.** Western blot analysis in HepG2 cell line lysates (35ug/lane) using PRRT1 Antibody . This demonstrates the PRRT1 antibody detected the PRRT1 protein (arrow).