

Datasheet for ABIN954342
anti-TMPRSS15 antibody (C-Term)[Go to Product page](#)

2 Images

Overview

Quantity:	0.4 mL
Target:	TMPRSS15
Binding Specificity:	AA 963-995, C-Term
Reactivity:	Human
Host:	Rabbit
Clonality:	Polyclonal
Conjugate:	This TMPRSS15 antibody is un-conjugated
Application:	Western Blotting (WB), Immunohistochemistry (Paraffin-embedded Sections) (IHC (p)), Enzyme Immunoassay (EIA)

Product Details

Immunogen:	KLH conjugated synthetic peptide between 963-995 amino acids from the C-terminal region of Human PRSS7 Genename: TMPRSS15
Isotype:	Ig Fraction
Specificity:	This antibody recognizes Human PRSS7 (C-term).
Purification:	Protein A column, followed by peptide affinity purification

Target Details

Target:	TMPRSS15
Alternative Name:	PRSS7 / ENTK (TMPRSS15 Products)

Target Details

Background: This gene encodes an enzyme that converts the pancreatic proenzyme trypsinogen to trypsin, which activates other proenzymes including chymotrypsinogen and procarboxypeptidases. The precursor protein is cleaved into two chains that form a heterodimer linked by a disulfide bond. This protein is a member of the trypsin family of peptidases. Mutations in this gene cause enterokinase deficiency, a malabsorption disorder characterized by diarrhea and failure to thrive. Synonyms: Enterokinase, Enteropeptidase, Serine protease 7, Transmembrane protease serine 15

Molecular Weight: 112925 Da

Gene ID: 5651

NCBI Accession: [NP_002763](#)

Application Details

Application Notes: Optimal working dilution should be determined by the investigator.

Restrictions: For Research Use only

Handling

Format: Liquid

Concentration: 0.25 mg/mL

Buffer: PBS, 0.09 % (W/V) Sodium Azide

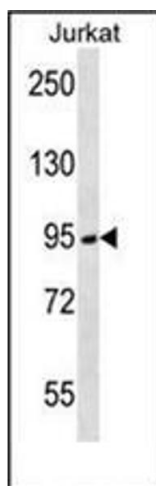
Preservative: Sodium azide

Precaution of Use: This product contains sodium azide: a POISONOUS AND HAZARDOUS SUBSTANCE which should be handled by trained staff only.

Handling Advice: Avoid repeated freezing and thawing.

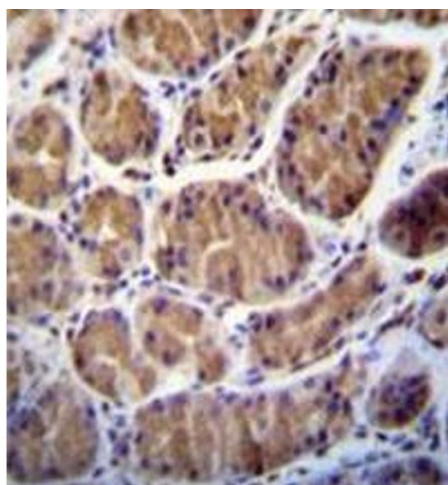
Storage: 4 °C/-20 °C

Storage Comment: Store undiluted at 2-8 °C for one month or (in aliquots) at -20 °C for longer.



Western Blotting

Image 1. Western blot analysis of PRSS7 / ENTK Antibody in Jurkat cell line lysates (35ug/lane). This demonstrates the PRSS7 antibody detected the PRSS7 protein (arrow).



Immunohistochemistry (Paraffin-embedded Sections)

Image 2. Formalin fixed and paraffin embedded human stomach tissue stained with PRSS7 / ENTK Antibody followed by peroxidase conjugation of the secondary antibody and DAB staining