

Datasheet for ABIN954343

anti-PRUNE antibody**2** Images[Go to Product page](#)

Overview

Quantity:	50 µg
Target:	PRUNE
Reactivity:	Human
Host:	Mouse
Clonality:	Monoclonal
Conjugate:	This PRUNE antibody is un-conjugated
Application:	Western Blotting (WB), Immunohistochemistry (Paraffin-embedded Sections) (IHC (p)), Enzyme Immunoassay (EIA)

Product Details

Immunogen:	Recombinant protein.
Clone:	1C11
Isotype:	IgG2a
Specificity:	This antibody recognizes PRUNE
Cross-Reactivity (Details):	Species reactivity (tested):Human.
Purification:	Protein A Chromatography

Target Details

Target:	PRUNE
Alternative Name:	PRUNE (PRUNE Products)

Target Details

Background: PRUNE, the human homologue of the Drosophila gene, is located in 1q21.3, a region highly amplified in human sarcomas, malignant tumours of mesenchymal origin. Human prune (h-prune), a phosphoesterase DHH family appertaining protein, physically interacts with nm23-H1, a metastasis suppressor gene. h-prune is involved in cellular motility and metastasis formation. Metastatic breast cancers were found to overexpress h-prune, h-prune was also found to be highly expressed in colorectal and pancreatic cancers. Hence h-prune is considered useful as a marker for tumor aggressiveness. Synonyms: DRES-17, DRES17, Drosophila-related expressed sequence 17, HTcD37, Protein prune homolog, hPrune

Gene ID: 58497

NCBI Accession: [NP_067045](#)

UniProt: [Q86TP1](#)

Application Details

Application Notes: Optimal working dilution should be determined by the investigator.

Restrictions: For Research Use only

Handling

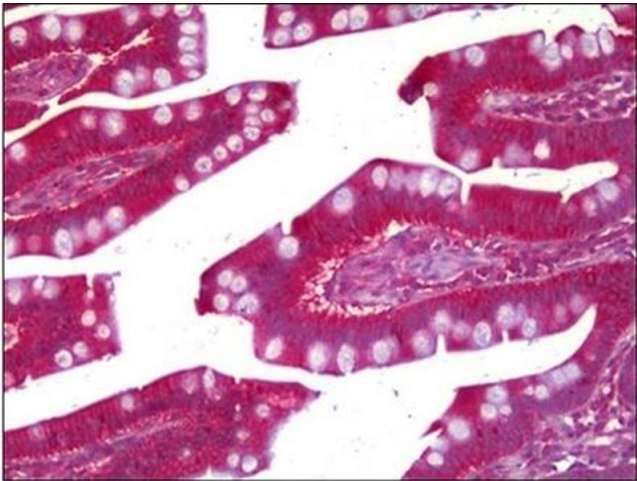
Concentration: 1.0 mg/mL

Buffer: PBS, pH 7.2

Handling Advice: Avoid repeated freezing and thawing.

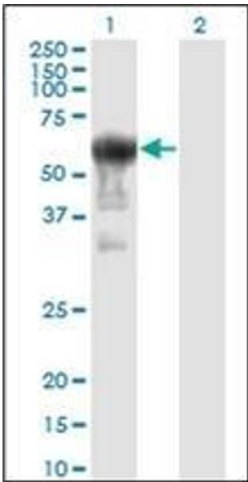
Storage: 4 °C/-20 °C

Storage Comment: Store the antibody undiluted at 2-8 °C for one month or (in aliquots) at -20 °C for longer.



Immunohistochemistry

Image 1.



Western Blotting

Image 2.