

Datasheet for ABIN954352
anti-PSG9 antibody (Middle Region)

2 Images

[Go to Product page](#)

Overview

Quantity:	0.4 mL
Target:	PSG9
Binding Specificity:	Middle Region
Reactivity:	Human
Host:	Rabbit
Clonality:	Polyclonal
Conjugate:	This PSG9 antibody is un-conjugated
Application:	Western Blotting (WB), Immunohistochemistry (Paraffin-embedded Sections) (IHC (p)), Enzyme Immunoassay (EIA)

Product Details

Immunogen:	KLH conjugated synthetic peptide selected from the Central region of human PSG9
Isotype:	Ig Fraction
Specificity:	This antibody recognizes Human PSG9 / PSG11 (Center).
Purification:	Affinity Chromatography on Protein A

Target Details

Target:	PSG9
Alternative Name:	PSG9 / PSG11 (PSG9 Products)
Background:	Synonyms: PS-beta-B, PS-beta-G-11, PS34, PSBG-11, PSBG-9, PSG7, Pregnancy-, Pregnancy-

Target Details

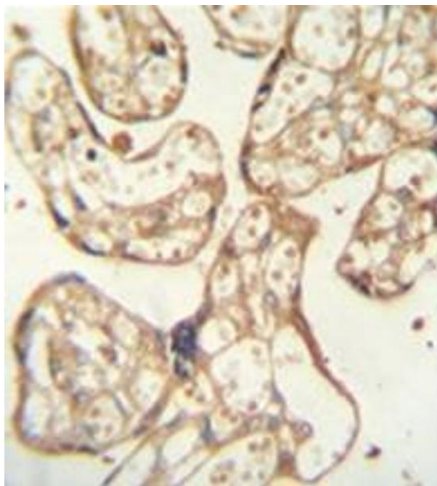
	specific beta-1 glycoprotein B, Pregnancy-specific beta-1-glycoprotein 11, Pregnancy-specific glycoprotein 11, Pregnancy-specific glycoprotein 7, Pregnancy-specific glycoprotein 9
Molecular Weight:	48272 Da
Gene ID:	5678
NCBI Accession:	NP_002775

Application Details

Application Notes:	Optimal working dilution should be determined by the investigator.
Restrictions:	For Research Use only

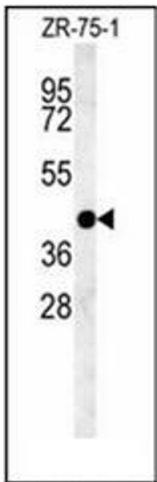
Handling

Format:	Liquid
Concentration:	0.25 mg/mL
Buffer:	PBS, 0.09 % Sodium Azide
Preservative:	Sodium azide
Precaution of Use:	This product contains sodium azide: a POISONOUS AND HAZARDOUS SUBSTANCE which should be handled by trained staff only.
Handling Advice:	Avoid repeated freezing and thawing.
Storage:	4 °C/-20 °C
Storage Comment:	Store undiluted at 2-8 °C for one month or (in aliquots) at -20 °C for longer.



Immunohistochemistry (Paraffin-embedded Sections)

Image 1. Formalin fixed and paraffin embedded human placenta tissue reacted with PSG9 Antibody (Center) followed by peroxidase conjugation of the secondary antibody and DAB staining.



Western Blotting

Image 2. Western blot analysis of PSG9 Antibody (Center) in ZR-75-1 cell line lysates (35ug/lane). This demonstrates the PSG9 antibody detected the PSG9 protein (arrow).