



Datasheet for ABIN954354  
**anti-FOLH1B antibody (C-Term)**



[Go to Product page](#)

2 Images

Overview

Quantity:	0.4 mL
Target:	FOLH1B
Binding Specificity:	AA 402-431, C-Term
Reactivity:	Human
Host:	Rabbit
Clonality:	Polyclonal
Conjugate:	This FOLH1B antibody is un-conjugated
Application:	Western Blotting (WB), Flow Cytometry (FACS), Enzyme Immunoassay (EIA)

Product Details

Immunogen:	KLH conjugated synthetic peptide between 402-431 amino acids from the C-terminal region of Human PSMAL
Isotype:	Ig Fraction
Specificity:	This antibody recognizes Human PSMAL (C-term).
Purification:	Affinity Chromatography on Protein A

Target Details

Target:	FOLH1B
Alternative Name:	PSMAL ( <a href="#">FOLH1B Products</a> )
Background:	FOLH1B has both folate hydrolase and N-acetylated-alpha-linked-acidic dipeptidase

## Target Details

---

(NAALADase) activity (By similarity) and exhibits a dipeptidyl-peptidase IV type activity (By similarity).Synonyms: FOLH1B, Putative N-acetylated-alpha-linked acidic dipeptidase

Molecular Weight: 50045 Da

Gene ID: 219595

NCBI Accession: [NP\\_710163](#)

## Application Details

---

Application Notes: Optimal working dilution should be determined by the investigator.

Restrictions: For Research Use only

## Handling

---

Format: Liquid

Concentration: 0.25 mg/mL

Buffer: PBS containing 0.09 % (W/V) Sodium Azide as preservative

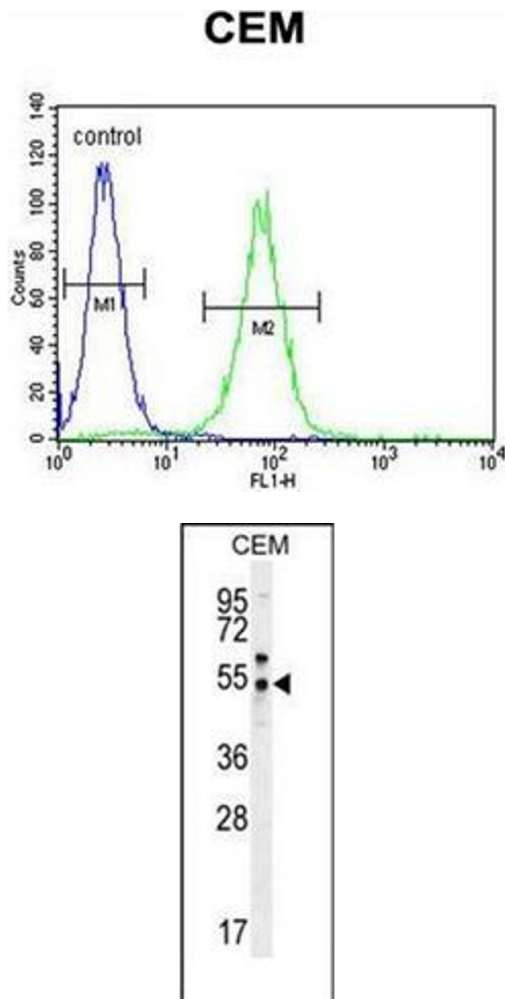
Preservative: Sodium azide

Precaution of Use: This product contains sodium azide: a POISONOUS AND HAZARDOUS SUBSTANCE which should be handled by trained staff only.

Handling Advice: Avoid repeated freezing and thawing.

Storage: 4 °C/-20 °C

Storage Comment: Store undiluted at 2-8 °C for one month or (in aliquots) at -20 °C for longer.



### Flow Cytometry

**Image 1.** Flow cytometric analysis of CEM cells using PSMAL Antibody (C-term) Cat.-No AP53485PU-N (right histogram) compared to a negative control cell (left histogram). FITC-conjugated goat-anti-rabbit secondary antibodies were used for the analysis.

### Western Blotting

**Image 2.** Western blot analysis of PSMAL Antibody (C-term) in CEM cell line lysates (35ug/lane). This demonstrates the PSMAL antibody detected the PSMAL protein (arrow).