

Datasheet for ABIN954355

anti-PSMB10 antibody (C-Term)[Go to Product page](#)**1** Image

Overview

Quantity:	0.4 mL
Target:	PSMB10
Binding Specificity:	AA 213-242, C-Term
Reactivity:	Human
Host:	Rabbit
Clonality:	Polyclonal
Conjugate:	This PSMB10 antibody is un-conjugated
Application:	Western Blotting (WB), Enzyme Immunoassay (EIA)

Product Details

Immunogen:	KLH conjugated synthetic peptide between 213-242 amino acids from the C-terminal region of Human PSMB10
Isotype:	Ig Fraction
Specificity:	This antibody recognizes Human PSMB10 (C-term).
Purification:	Affinity Chromatography on Protein A

Target Details

Target:	PSMB10
Alternative Name:	PSMB10 (PSMB10 Products)
Background:	The proteasome is a multicatalytic proteinase complex with a highly ordered ring-shaped 20S

Target Details

core structure. The core structure is composed of 4 rings of 28 non-identical subunits, 2 rings are composed of 7 alpha subunits and 2 rings are composed of 7 beta subunits. Proteasomes are distributed throughout eukaryotic cells at a high concentration and cleave peptides in an ATP/ubiquitin-dependent process in a non-lysosomal pathway. An essential function of a modified proteasome, the immunoproteasome, is the processing of class I MHC peptides. This gene encodes a member of the proteasome B-type family, also known as the T1B family, that is a 20S core beta subunit. Proteolytic processing is required to generate a mature subunit. Expression of this gene is induced by gamma interferon, and this gene product replaces catalytic subunit 2 (proteasome beta 7 subunit) in the immunoproteasome. Synonyms: EC=3.4.25.1, MECL1, Macropain subunit MECL-1, Multicatalytic endopeptidase complex subunit MECL-1, PSMB10, Proteasome MECL-1, Proteasome subunit beta type-10, Proteasome subunit beta-2i

Molecular Weight: 28936 Da

Gene ID: 5699

NCBI Accession: [NP_002792](#)

Pathways: [Mitotic G1-G1/S Phases](#), [DNA Replication](#), [Synthesis of DNA](#)

Application Details

Application Notes: Optimal working dilution should be determined by the investigator.

Restrictions: For Research Use only

Handling

Format: Liquid

Concentration: 0.25 mg/mL

Buffer: PBS containing 0.09 % (W/V) Sodium Azide as preservative

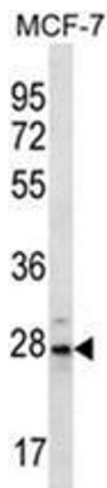
Preservative: Sodium azide

Precaution of Use: This product contains sodium azide: a POISONOUS AND HAZARDOUS SUBSTANCE which should be handled by trained staff only.

Handling Advice: Avoid repeated freezing and thawing.

Storage: 4 °C/-20 °C

Storage Comment: Store undiluted at 2-8 °C for one month or (in aliquots) at -20 °C for longer.



Western Blotting

Image 1. Western blot analysis of PSMB10 Antibody (C-term) in MCF-7 cell line lysates (35ug/lane). This demonstrates the PSMB10 antibody detected the PSMB10 protein (arrow).