

Datasheet for ABIN954357

anti-PSMG2 antibody (C-Term)



[Go to Product page](#)

1 Image

Overview

Quantity:	0.4 mL
Target:	PSMG2
Binding Specificity:	AA 224-253, C-Term
Reactivity:	Human
Host:	Rabbit
Clonality:	Polyclonal
Conjugate:	This PSMG2 antibody is un-conjugated
Application:	Western Blotting (WB), Enzyme Immunoassay (EIA)

Product Details

Immunogen:	KLH conjugated synthetic peptide between 224~253 amino acids from the C-terminal region of human PSMG2
Isotype:	Ig Fraction
Specificity:	This antibody recognizes Human PSMG2 / PAC2 (C-term).
Purification:	Affinity Chromatography on Protein A

Target Details

Target:	PSMG2
Alternative Name:	PSMG2 / PAC2 (PSMG2 Products)
Background:	Chaperone protein which promotes assembly of the 20S proteasome as part of a heterodimer

Target Details

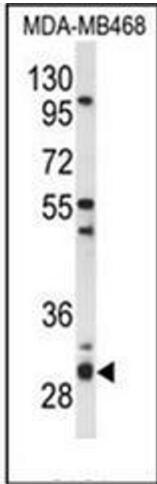
	with PSMG1. The PSMG1-PSMG2 heterodimer binds to the PSMA5 and PSMA7 proteasome subunits, promotes assembly of the proteasome alpha subunits into the heteroheptameric alpha ring and prevents alpha ring dimerization.Synonyms: HCCA3, Hepatocellular carcinoma-susceptibility protein 3, PAC-2, Proteasome assembly chaperone 2, TNFSF5IP1, Tumor necrosis factor superfamily member 5-induced protein 1
Molecular Weight:	29396 Da
Gene ID:	56984
NCBI Accession:	NP_064617
Pathways:	Monocarboxylic Acid Catabolic Process

Application Details

Application Notes:	Optimal working dilution should be determined by the investigator.
Restrictions:	For Research Use only

Handling

Format:	Liquid
Concentration:	0.25 mg/mL
Buffer:	PBS containing 0.09 % (W/V) Sodium Azide as preservative
Preservative:	Sodium azide
Precaution of Use:	This product contains sodium azide: a POISONOUS AND HAZARDOUS SUBSTANCE which should be handled by trained staff only.
Handling Advice:	Avoid repeated freezing and thawing.
Storage:	4 °C/-20 °C
Storage Comment:	Store undiluted at 2-8 °C for one month or (in aliquots) at -20 °C for longer.



Western Blotting

Image 1. Western blot analysis of PSMG2 Antibody (C-term) in MDA-MB468 cell line lysates (35ug/lane). PSMG2 (arrow) was detected using the purified Pab.