

Datasheet for ABIN954360

anti-PSTPIP1 antibody (N-Term)[Go to Product page](#)**1** Image

Overview

Quantity:	0.4 mL
Target:	PSTPIP1
Binding Specificity:	AA 88-118, N-Term
Reactivity:	Human
Host:	Rabbit
Clonality:	Polyclonal
Conjugate:	This PSTPIP1 antibody is un-conjugated
Application:	Western Blotting (WB), Enzyme Immunoassay (EIA)

Product Details

Immunogen:	KLH conjugated synthetic peptide between 88-118 amino acids from the N-terminal region of Human PSTPIP1 / CD28P1 Genename: PSTPIP1
Isotype:	Ig Fraction
Specificity:	This antibody recognizes Human PSTPIP1 / CD2BP1 (N-term).
Purification:	Affinity Chromatography on Protein A

Target Details

Target:	PSTPIP1
Alternative Name:	PSTPIP1 / CD2BP1 (PSTPIP1 Products)
Background:	The protein encoded by this gene binds to the cytoplasmic tail of CD2, an effector of T cell

Target Details

activation and adhesion, negatively affecting CD2-triggered T cell activation. The encoded protein appears to be a scaffold protein and a regulator of the actin cytoskeleton. It has also been shown to bind ABL1, PTPN18, WAS, CD2AP, and PTPN12. Mutations in this gene are a cause of PAPA syndrome. Synonyms: CD2 antigen-binding protein 1, CD2 cytoplasmic tail-binding protein, CD2-binding protein 1, CD2BP1L, CD2BP1S, H-PIP, PAPAS, PEST phosphatase-interacting protein 1, PSTPIP, Proline-serine-threonine phosphatase-interacting protein 1

Molecular Weight: 47591 Da

Gene ID: 9051

NCBI Accession: [NP_003969](#)

Application Details

Application Notes: Optimal working dilution should be determined by the investigator.

Restrictions: For Research Use only

Handling

Format: Liquid

Concentration: 0.25 mg/mL

Buffer: PBS, 0.09 % Sodium Azide

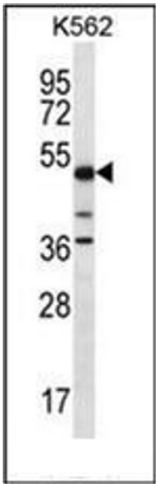
Preservative: Sodium azide

Precaution of Use: This product contains sodium azide: a POISONOUS AND HAZARDOUS SUBSTANCE which should be handled by trained staff only.

Handling Advice: Avoid repeated freezing and thawing.

Storage: 4 °C/-20 °C

Storage Comment: Store undiluted at 2-8 °C for one month or (in aliquots) at -20 °C for longer.



Western Blotting

Image 1. Western blot analysis of STPIP1 / CD2BP1 Antibody (N-term) in K562 cell line lysates (35ug/lane). This demonstrates the PSTPIP1 antibody detected the PSTPIP1 protein (arrow).