

Datasheet for ABIN954364

**anti-PTCHD2 antibody (N-Term)**[Go to Product page](#)**1** Image

## Overview

Quantity:	0.4 mL
Target:	PTCHD2
Binding Specificity:	AA 178-207, N-Term
Reactivity:	Human
Host:	Rabbit
Clonality:	Polyclonal
Conjugate:	This PTCHD2 antibody is un-conjugated
Application:	Western Blotting (WB), Enzyme Immunoassay (EIA)

## Product Details

Immunogen:	KLH conjugated synthetic peptide between 178-207 amino acids from the N-terminal region of Human PTHD2.
Isotype:	Ig Fraction
Specificity:	This antibody recognizes Human PTHD2 (N-term).
Purification:	Affinity Chromatography on Protein A__

## Target Details

Target:	PTCHD2
Alternative Name:	PTCHD2 ( <a href="#">PTCHD2 Products</a> )
Background:	Synonyms: DISP3, KIAA1337, Patched domain-containing protein 2, Protein dispatched

## Target Details

	homolog 3
Molecular Weight:	104kd
Gene ID:	57540
NCBI Accession:	<a href="#">NP_065831</a>

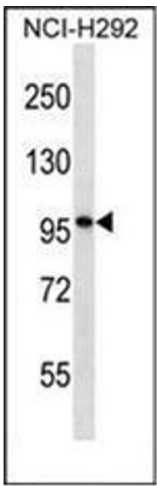
## Application Details

Application Notes:	Optimal working dilution should be determined by the investigator.
Restrictions:	For Research Use only

## Handling

Format:	Liquid
Concentration:	0.25 mg/mL
Buffer:	PBS containing 0.09 % (W/V) Sodium Azide as preservative
Preservative:	Sodium azide
Precaution of Use:	This product contains sodium azide: a POISONOUS AND HAZARDOUS SUBSTANCE which should be handled by trained staff only.
Handling Advice:	Avoid repeated freezing and thawing.
Storage:	4 °C/-20 °C
Storage Comment:	Store undiluted at 2-8 °C for one month or (in aliquots) at -20 °C for longer.

## Images



### Western Blotting

**Image 1.** Western blot analysis of PTHD2 Antibody (N-term) in NCI-H292 cell line lysates (35ug/lane). This demonstrates the PTHD2 antibody detected the PTHD2 protein (arrow).