

Datasheet for ABIN954366
anti-PTDSS2 antibody (N-Term)[Go to Product page](#)

2 Images

Overview

Quantity:	0.4 mL
Target:	PTDSS2
Binding Specificity:	AA 1-30, N-Term
Reactivity:	Human
Host:	Rabbit
Clonality:	Polyclonal
Conjugate:	This PTDSS2 antibody is un-conjugated
Application:	Western Blotting (WB), Immunohistochemistry (Paraffin-embedded Sections) (IHC (p)), Enzyme Immunoassay (EIA)

Product Details

Immunogen:	KLH conjugated synthetic peptide between 1-30 amino acids from the N-terminal region of Human PTDSS2
Isotype:	Ig Fraction
Specificity:	This antibody recognizes Human PTDSS2 (N-term).
Purification:	Affinity chromatography on Protein A

Target Details

Target:	PTDSS2
Alternative Name:	PTDSS2 (PTDSS2 Products)

Target Details

Background: Phosphatidylserine (PS) accounts for 5 to 10 % of cell membrane phospholipids. In addition to its role as a structural component, PS is involved in cell signaling, blood coagulation, and apoptosis. PS is synthesized by a calcium-dependent base-exchange reaction catalyzed by PS synthases (EC 2.7.8.8), like PTSS2, that exchange L-serine for the polar head group of phosphatidylcholine (PC) or phosphatidylethanolamine (PE) (Sturbois-Balcerzak et al., 2001 [PubMed 11084049]). Synonyms: PSS-2, PSS2, Phosphatidylserine synthase 2, PtdSer synthase 2, Serine-exchange enzyme II

Molecular Weight: 56253 Da

Gene ID: 81490

NCBI Accession: [NP_110410](#)

Application Details

Application Notes: Optimal working dilution should be determined by the investigator.

Restrictions: For Research Use only

Handling

Format: Liquid

Concentration: 0.25 mg/mL

Buffer: PBS containing 0.09 % (W/V) Sodium Azide as preservative

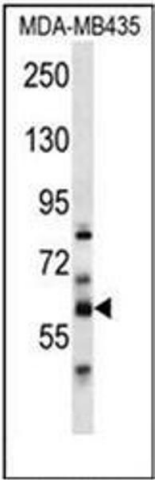
Preservative: Sodium azide

Precaution of Use: This product contains sodium azide: a POISONOUS AND HAZARDOUS SUBSTANCE which should be handled by trained staff only.

Handling Advice: Avoid repeated freezing and thawing.

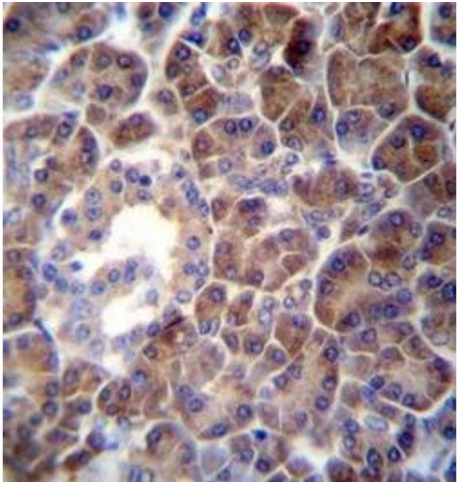
Storage: 4 °C/-20 °C

Storage Comment: Store undiluted at 2-8 °C for one month or (in aliquots) at -20 °C for longer.



Western Blotting

Image 1. Western blot analysis of PTDSS2 Antibody (N-term) in MDA-MB435 cell line lysates (35ug/lane). This demonstrates the PTDSS2 antibody detected the PTDSS2 protein (arrow).



Immunohistochemistry (Paraffin-embedded Sections)

Image 2. Formalin fixed and paraffin embedded human pancreas tissue reacted with PTDSS2 Antibody (N-term) followed by peroxidase conjugation of the secondary antibody and DAB staining.