

Datasheet for ABIN954374

anti-PTPN20 antibody (Middle Region)**3** Images[Go to Product page](#)

Overview

Quantity:	0.4 mL
Target:	PTPN20 (PTPN20B)
Binding Specificity:	AA 185-215, Middle Region
Reactivity:	Human
Host:	Rabbit
Clonality:	Polyclonal
Conjugate:	This PTPN20 antibody is un-conjugated
Application:	Western Blotting (WB), Flow Cytometry (FACS), Enzyme Immunoassay (EIA), Immunohistochemistry (Paraffin-embedded Sections) (IHC (p))

Product Details

Immunogen:	Synthetic peptide - KLH conjugated - corresponding to the central region (between 185-215aa) of human PTPN20A.
Isotype:	Ig Fraction
Specificity:	This antibody recognizes PTPN20.
Cross-Reactivity (Details):	Species reactivity (tested):Human
Purification:	Purified through a Protein A column followed by peptide affinity purification

Target Details

Target:	PTPN20 (PTPN20B)
---------	------------------

Target Details

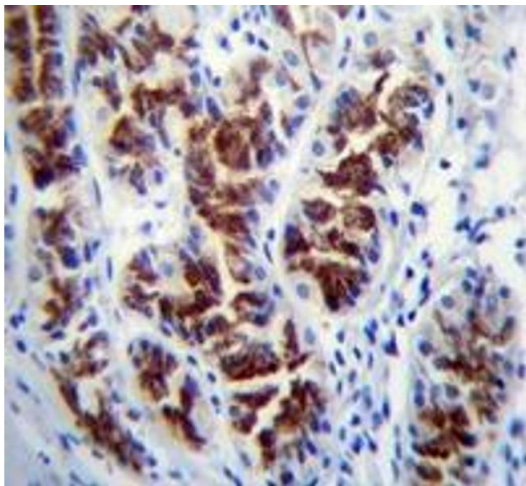
Alternative Name:	PTPN20 (PTPN20B Products)
Background:	<p>The product of the PTPN20A (and PTPN20B) gene belongs to the family of classical tyrosine-specific protein tyrosine phosphatases. Many protein tyrosine phosphatases have been shown to regulate fundamental cellular processes and several are mutated in human diseases.</p> <p>Chromosome 10q contains a segmental duplication resulting in multiple copies of the protein tyrosine phosphatase, non-receptor type 20 gene. The two nearly identical copies are designated as PTPN20A and PTPN20B. A third copy is only partially duplicated and contains a pseudogene, designated as PTPN20C. This gene encodes the more telomeric copy, PTPN20B. Multiple alternatively spliced transcript variants encoding different isoforms have been identified. Synonyms: PTPN20A, PTPN20B, RP11-142I17.1, Tyrosine-protein phosphatase non-receptor type 20</p>
Gene ID:	26095
NCBI Accession:	NP_001035816

Application Details

Application Notes:	Optimal working dilution should be determined by the investigator.
Restrictions:	For Research Use only

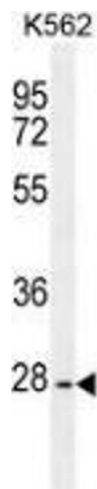
Handling

Format:	Liquid
Concentration:	0.25 mg/mL
Buffer:	PBS with 0.09 % (W/V) Sodium azide
Preservative:	Sodium azide
Precaution of Use:	This product contains sodium azide: a POISONOUS AND HAZARDOUS SUBSTANCE which should be handled by trained staff only.
Handling Advice:	Avoid repeated freezing and thawing.
Storage:	4 °C/-20 °C
Storage Comment:	Store undiluted at 2-8 °C for one month or (in aliquots) at -20 °C for longer.



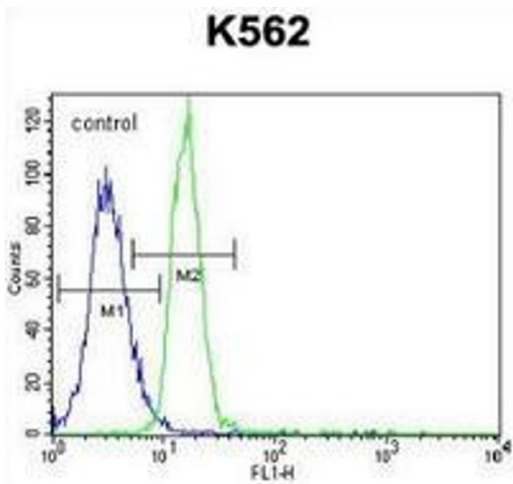
Immunohistochemistry (Paraffin-embedded Sections)

Image 1. Immunohistochemistry analysis in human stomach tissue (Formalin-fixed, Paraffin-embedded) using PTPN20 Antibody , followed by peroxidase conjugated secondary antibody and DAB staining. This data demonstrates the use of PTPN20 antibody for IHC. Clinical relevance has not been evaluated.



Western Blotting

Image 2. Western blot analysis in K562 cell line lysates (35ug/lane) using PTPN20 Antibody . This demonstrates the PTPN20A antibody detected the PTPN20A protein (arrow).



Flow Cytometry

Image 3. Flow cytometric analysis of K562 cells (right histogram) compared to a negative control cell (left histogram) using PTPN20 Antibody , followed by FITC-conjugated goat-anti-rabbit secondary antibodies.