

Datasheet for ABIN954383
anti-PTTG1IP antibody (Internal Region)[Go to Product page](#)

2 Images

Overview

Quantity:	50 µg
Target:	PTTG1IP
Binding Specificity:	Internal Region
Reactivity:	Human, Rat, Mouse
Host:	Rabbit
Clonality:	Polyclonal
Conjugate:	This PTTG1IP antibody is un-conjugated
Application:	Western Blotting (WB), Immunohistochemistry (Paraffin-embedded Sections) (IHC (p)), Enzyme Immunoassay (EIA)

Product Details

Immunogen:	Synthetic peptide from Human PTTG. Epitope: Internal.
Isotype:	IgG
Specificity:	This antibody detects endogenous levels of total PTTG protein.
Cross-Reactivity (Details):	Species reactivity (expected): Mouse and Rat. Species reactivity (tested): Human.
Purification:	Immunoaffinity Chromatography

Target Details

Target:	PTTG1IP
---------	---------

Target Details

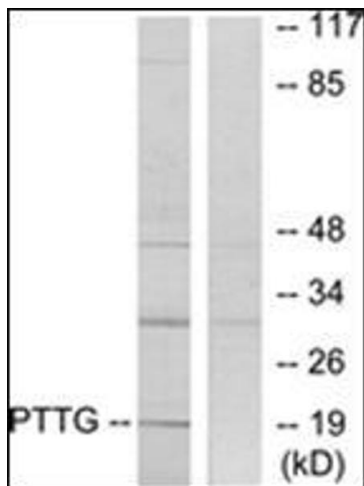
Alternative Name:	PTTG1IP (PTTG1IP Products)
Background:	The encoded protein, which directly binds to pituitary tumor-transforming protein-1 (PTTG1), facilitates the nuclear translocation of PTTG1 and potentiates the transcriptional activation of basic fibroblast growth factor by PTTG1. The gene product localizes to both the cytoplasm and nucleus. Its NLS is required for its own nuclear localization, the nuclear localization of PTTG1, and its interaction with PTTG1. Synonyms: C21orf1, C21orf3, PBF, PTTG-binding factor, Pituitary tumor-transforming gene 1 protein-interacting protein, Pituitary tumor-transforming gene protein-binding factor
Gene ID:	754
NCBI Accession:	NP_004330
Pathways:	Protein targeting to Nucleus

Application Details

Application Notes:	Optimal working dilution should be determined by the investigator.
Restrictions:	For Research Use only

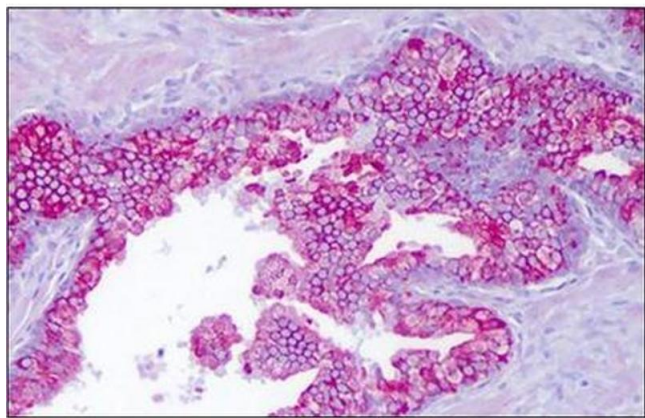
Handling

Concentration:	1.0 mg/mL
Buffer:	PBS (without Mg ²⁺ , Ca ²⁺), pH 7.4, 150 mM Sodium Chloride, 0.02 % Sodium Azide and 50 % Glycerol
Preservative:	Sodium azide
Precaution of Use:	This product contains sodium azide: a POISONOUS AND HAZARDOUS SUBSTANCE which should be handled by trained staff only.
Handling Advice:	Avoid repeated freezing and thawing.
Storage:	4 °C/-20 °C
Storage Comment:	Store the antibody undiluted at 2-8 °C for one month or (in aliquots) at -20 °C for longer.



Western Blotting

Image 1. Western blot analysis of extracts from RAW264.7 cells, using AP31754PU-N. The lane on the right is treated with the synthesized peptide.



Immunohistochemistry (Paraffin-embedded Sections)

Image 2. Human Prostate, Epithelium: Formalin-Fixed, Paraffin-Embedded (FFPE)