

Datasheet for ABIN954386  
**anti-PURB antibody (C-Term)**

## 2 Images

[Go to Product page](#)

## Overview

Quantity:	0.4 mL
Target:	PURB
Binding Specificity:	AA 267-297, C-Term
Reactivity:	Human
Host:	Rabbit
Clonality:	Polyclonal
Conjugate:	This PURB antibody is un-conjugated
Application:	Western Blotting (WB), Flow Cytometry (FACS), Enzyme Immunoassay (EIA)

## Product Details

Immunogen:	KLH conjugated synthetic peptide between 267-297 amino acids from the C-terminal region of Human PURB
Isotype:	Ig Fraction
Specificity:	This antibody recognizes Human PURB (C-term).
Purification:	Affinity Chromatography on Protein A

## Target Details

Target:	PURB
Alternative Name:	PURB ( <a href="#">PURB Products</a> )
Background:	This gene product is a sequence-specific, single-stranded DNA-binding protein. It binds

## Target Details

preferentially to the single strand of the purine-rich element termed PUR, which is present at origins of replication and in gene flanking regions in a variety of eukaryotes from yeasts through humans. Thus, it is implicated in the control of both DNA replication and transcription. Deletion of this gene has been associated with myelodysplastic syndrome and acute myelogenous leukemia.Synonyms: Pur-beta, Purine-rich element-binding protein B, Transcriptional activator protein Pur-beta

Molecular Weight: 33241 Da

Gene ID: 5814

NCBI Accession: [NP\\_150093](#)

## Application Details

Application Notes: Optimal working dilution should be determined by the investigator.

Restrictions: For Research Use only

## Handling

Format: Liquid

Concentration: 0.25 mg/mL

Buffer: PBS, 0.09 % Sodium Azide

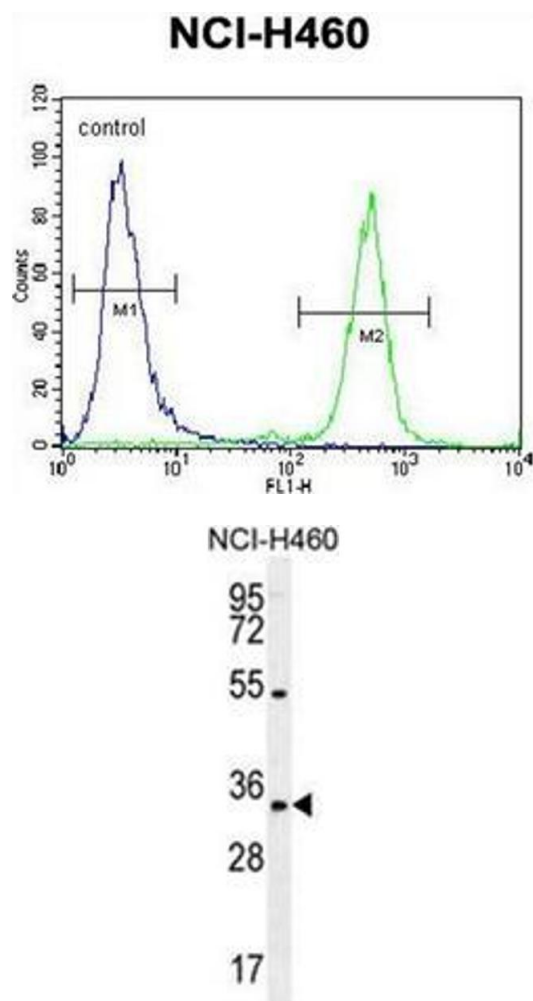
Preservative: Sodium azide

Precaution of Use: This product contains sodium azide: a POISONOUS AND HAZARDOUS SUBSTANCE which should be handled by trained staff only.

Handling Advice: Avoid repeated freezing and thawing.

Storage: 4 °C/-20 °C

Storage Comment: Store undiluted at 2-8 °C for one month or (in aliquots) at -20 °C for longer.



Flow Cytometry

**Image 1.** Flow cytometric analysis of NCI-H460 cells using PURB Antibody (C-term) Cat.-No AP53519PU-N (right histogram) compared to a negative control cell (left histogram). FITC-conjugated goat-anti-rabbit secondary antibodies were used for the analysis.

Western Blotting

**Image 2.** Western blot analysis of PURB Antibody (C-term) in NCI-H460 cell line lysates (35ug/lane). This demonstrates the PURB antibody detected the PURB protein (arrow).