



[Go to Product page](#)

Datasheet for ABIN954394

anti-PYCR2 antibody (Middle Region)

2 Images

Overview

Quantity:	0.4 mL
Target:	PYCR2
Binding Specificity:	AA 96-124, Middle Region
Reactivity:	Human
Host:	Rabbit
Clonality:	Polyclonal
Conjugate:	This PYCR2 antibody is un-conjugated
Application:	Western Blotting (WB), Immunohistochemistry (Paraffin-embedded Sections) (IHC (p)), Enzyme Immunoassay (EIA)

Product Details

Immunogen:	KLH conjugated synthetic peptide between 96-124 amino acids from the Central region of Human PYCR2
Isotype:	Ig Fraction
Specificity:	This antibody recognizes Human PYCR2 (Center).
Purification:	Affinity Chromatography on Protein A

Target Details

Target:	PYCR2
Alternative Name:	PYCR2 (PYCR2 Products)

Target Details

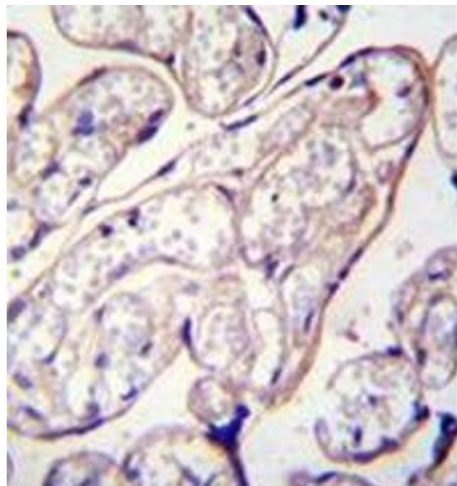
Background:	PYCR2 belongs to the pyrroline-5-carboxylate reductase family. Pyrroline-5-carboxylate reductase catalyzes the the NAD(P)H-dependent conversion of proline to pyrroline-5-carboxylate.Synonyms: P5C reductase 2, P5CR 2, Pyrroline-5-carboxylate reductase 2
Molecular Weight:	33637 Da
Gene ID:	29920
NCBI Accession:	NP_037460

Application Details

Application Notes:	Optimal working dilution should be determined by the investigator.
Restrictions:	For Research Use only

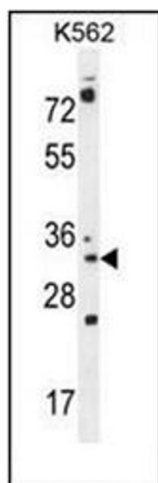
Handling

Format:	Liquid
Concentration:	0.25 mg/mL
Buffer:	PBS, 0.09 % Sodium Azide
Preservative:	Sodium azide
Precaution of Use:	This product contains sodium azide: a POISONOUS AND HAZARDOUS SUBSTANCE which should be handled by trained staff only.
Handling Advice:	Avoid repeated freezing and thawing.
Storage:	4 °C/-20 °C
Storage Comment:	Store undiluted at 2-8 °C for one month or (in aliquots) at -20 °C for longer.



Immunohistochemistry (Paraffin-embedded Sections)

Image 1. Formalin fixed and paraffin embedded human placenta tissue reacted with PYCR2 Antibody (Center) followed by peroxidase conjugation of the secondary antibody and DAB staining.



Western Blotting

Image 2. Western blot analysis of PYCR2 Antibody (Center) in K562 cell line lysates (35ug/lane). This demonstrates the PYCR2 antibody detected the PYCR2 protein (arrow).