

Datasheet for ABIN954395  
**anti-PYGO1 antibody (C-Term)**



[Go to Product page](#)

3 Images

## Overview

Quantity:	0.4 mL
Target:	PYGO1
Binding Specificity:	AA 389-417, C-Term
Reactivity:	Human
Host:	Rabbit
Clonality:	Polyclonal
Conjugate:	This PYGO1 antibody is un-conjugated
Application:	Western Blotting (WB), Immunofluorescence (IF), Immunohistochemistry (Paraffin-embedded Sections) (IHC (p)), Enzyme Immunoassay (EIA)

## Product Details

Immunogen:	KLH conjugated synthetic peptide between 389-417 amino acids from the C-terminal region of Human PYGO1
Isotype:	Ig Fraction
Specificity:	This antibody recognizes Human PYGO1 (C-term).
Purification:	Affinity Chromatography on Protein A

## Target Details

Target:	PYGO1
Alternative Name:	PYGO1 ( <a href="#">PYGO1 Products</a> )

## Target Details

---

Background:	PYG01 is involved in signal transduction through the Wnt pathway Synonyms: Pygopus homolog 1
Molecular Weight:	45116 Da
Gene ID:	26108
NCBI Accession:	<a href="#">NP_056432</a>
Pathways:	<a href="#">WNT Signaling</a>

## Application Details

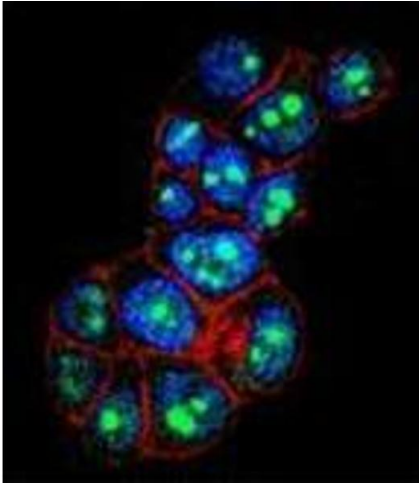
---

Application Notes:	Optimal working dilution should be determined by the investigator.
Restrictions:	For Research Use only

## Handling

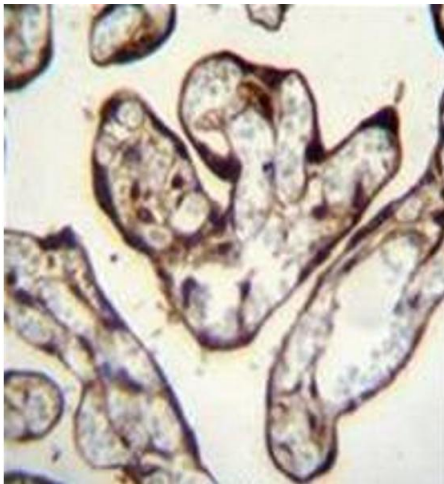
---

Format:	Liquid
Concentration:	0.25 mg/mL
Buffer:	PBS, 0.09 % Sodium Azide
Preservative:	Sodium azide
Precaution of Use:	This product contains sodium azide: a POISONOUS AND HAZARDOUS SUBSTANCE which should be handled by trained staff only.
Handling Advice:	Avoid repeated freezing and thawing.
Storage:	4 °C/-20 °C
Storage Comment:	Store undiluted at 2-8 °C for one month or (in aliquots) at -20 °C for longer.



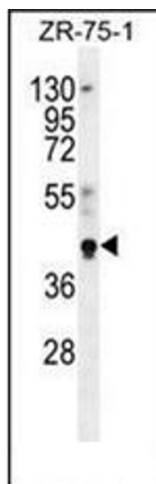
### Immunofluorescence

**Image 1.** Confocal immunofluorescent analysis of PYGO1 Antibody (C-term) Cat.-No AP53530PU-N with ZR-75-1 cell followed by Alexa Fluor 488-conjugated goat anti-rabbit IgG (green). Actin filaments have been labeled with Alexa Fluor 555 phalloidin (red). DAPI was used to stain the cell nuclear (blue).



### Immunohistochemistry (Paraffin-embedded Sections)

**Image 2.** Formalin fixed and paraffin embedded human placenta tissue reacted with PYGO1 Antibody (C-term) followed by peroxidase conjugation of the secondary antibody and DAB staining.



### Western Blotting

**Image 3.** Western blot analysis of PYGO1 Antibody (C-term) in ZR-75-1 cell line lysates (35ug/lane). This demonstrates the PYGO1 antibody detected the PYGO1 protein (arrow).