

Datasheet for ABIN954399
anti-QTRTD1 antibody (C-Term)



[Go to Product page](#)

4 Images

Overview

Quantity:	0.4 mL
Target:	QTRTD1
Binding Specificity:	AA 328-359, C-Term
Reactivity:	Human
Host:	Rabbit
Clonality:	Polyclonal
Application:	Western Blotting (WB), Flow Cytometry (FACS), Immunofluorescence (IF), Immunohistochemistry (Paraffin-embedded Sections) (IHC (p)), Enzyme Immunoassay (EIA)

Product Details

Immunogen:	KLH conjugated synthetic peptide between 328-359 amino acids from the C-terminal region of Human QTRTD1. Genename: QTRTD1
Isotype:	Ig Fraction
Specificity:	This antibody recognizes Human QTRTD1 (C-term).
Purification:	Affinity Chromatography on Protein A

Target Details

Target:	QTRTD1
Alternative Name:	QTRTD1 (QTRTD1 Products)
Background:	Interacts with QTRT1 to form an active queuine tRNA-ribosyltransferase. This enzyme exchanges queuine for the guanine at the wobble position of tRNAs with GU(N) anticodons

Target Details

(tRNA-Asp, -Asn, -His and -Tyr), thereby forming the hypermodified nucleoside queuosine (Q) (7-(((4,5-cis-dihydroxy-2-cyclopenten-1-yl)amino)methyl)-7-deazaguanosine) (By similarity).Synonyms: Queuine tRNA-ribosyltransferase subunit QTRTD1

Molecular Weight: 46713 Da

Gene ID: 79691

NCBI Accession: [NP_078914](#)

Pathways: [Ribonucleoside Biosynthetic Process](#)

Application Details

Application Notes: Optimal working dilution should be determined by the investigator.

Restrictions: For Research Use only

Handling

Format: Liquid

Concentration: 0.25 mg/mL

Buffer: PBS, 0.09 % Sodium Azide

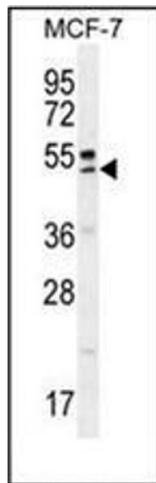
Preservative: Sodium azide

Precaution of Use: This product contains sodium azide: a POISONOUS AND HAZARDOUS SUBSTANCE which should be handled by trained staff only.

Handling Advice: Avoid repeated freezing and thawing.

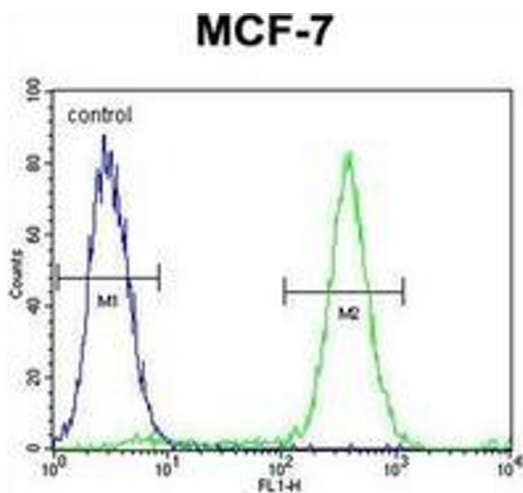
Storage: 4 °C/-20 °C

Storage Comment: Store undiluted at 2-8 °C for one month or (in aliquots) at -20 °C for longer.



Western Blotting

Image 1. Western blot analysis of QTRTD1 Antibody (C-term) in MCF-7 cell line lysates (35ug/lane). This demonstrates the QTRTD1 antibody detected the QTRTD1 protein (arrow)



Flow Cytometry

Image 2. Flow cytometric analysis of MCF-7 cells using QTRTD1 Antibody (C-term) Cat.-No AP53533PU-N (right histogram) compared to a negative control cell (left histogram). FITC-conjugated goat-anti-rabbit secondary antibodies were used for the analysis.



Immunofluorescence

Image 3. Confocal immunofluorescent analysis of QTRTD1 Antibody (C-term) Cat.-No AP53533PU-N with MCF-7 cell followed by Alexa Fluor 488-conjugated goat anti-rabbit IgG (green). DAPI was used to stain the cell nuclear (blue).

Please check the [product details page](#) for more images. Overall 4 images are available for ABIN954399.