

Datasheet for ABIN954410
anti-RAB27B antibody (Middle Region)[Go to Product page](#)

2 Images

Overview

Quantity:	0.4 mL
Target:	RAB27B
Binding Specificity:	AA 128-158, Middle Region
Reactivity:	Human
Host:	Rabbit
Clonality:	Polyclonal
Conjugate:	This RAB27B antibody is un-conjugated
Application:	Western Blotting (WB), Immunohistochemistry (Paraffin-embedded Sections) (IHC (p)), Enzyme Immunoassay (EIA)

Product Details

Immunogen:	KLH conjugated synthetic peptide between 128-158 amino acids from the Central region of Human RAB27B.
Isotype:	Ig Fraction
Specificity:	This antibody recognizes Human RAB27B (Center).
Purification:	Affinity chromatography on Protein A

Target Details

Target:	RAB27B
Alternative Name:	RAB27B (RAB27B Products)

Target Details

Background: Members of the Rab protein family, including RAB27B, are prenylated, membrane-bound proteins involved in vesicular fusion and trafficking (Chen et al., 1997 [PubMed 9066979]). [supplied by OMIM].Synonyms: C25KG, Rab-27B, Ras-related protein Rab-27B

Molecular Weight: 24608 Da

Gene ID: 5874

NCBI Accession: [NP_004154](#)

Application Details

Application Notes: Optimal working dilution should be determined by the investigator.

Restrictions: For Research Use only

Handling

Format: Liquid

Concentration: 0.25 mg/mL

Buffer: PBS, 0.09 % Sodium Azide

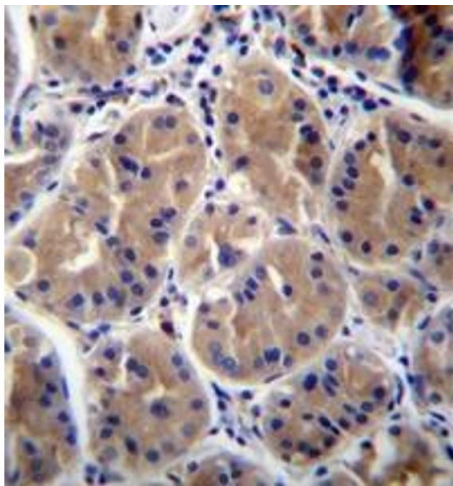
Preservative: Sodium azide

Precaution of Use: This product contains sodium azide: a POISONOUS AND HAZARDOUS SUBSTANCE which should be handled by trained staff only.

Handling Advice: Avoid repeated freezing and thawing.

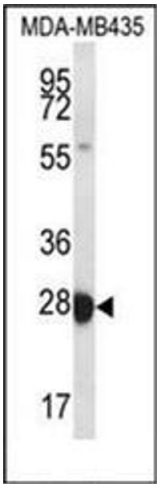
Storage: 4 °C/-20 °C

Storage Comment: Store undiluted at 2-8 °C for one month or (in aliquots) at -20 °C for longer.



Immunohistochemistry (Paraffin-embedded Sections)

Image 1. Formalin fixed and paraffin embedded human stomach tissue reacted with RAB27B Antibody followed by peroxidase conjugation of the secondary antibody and DAB staining.



Western Blotting

Image 2. Western blot analysis of RAB27B Antibody in MDA-MB435 cell line lysates (35ug/lane). This demonstrates the RAB27B antibody detected the RAB27B protein (arrow).