

Datasheet for ABIN954415
anti-RAB3IL1 antibody (C-Term)

2 Images

[Go to Product page](#)

Overview

Quantity:	0.4 mL
Target:	RAB3IL1
Binding Specificity:	AA 297-325, C-Term
Reactivity:	Human
Host:	Rabbit
Clonality:	Polyclonal
Conjugate:	This RAB3IL1 antibody is un-conjugated
Application:	Western Blotting (WB), Flow Cytometry (FACS), Enzyme Immunoassay (EIA)

Product Details

Immunogen:	KLH conjugated synthetic peptide between 297-325 amino acids from the C-terminal region of Human RAB3IL1 Genename: RAB3IL1
Isotype:	Ig Fraction
Specificity:	This antibody recognizes Human RAB3IL1 (C-term).
Purification:	Affinity Chromatography on Protein A

Target Details

Target:	RAB3IL1
Alternative Name:	RAB3IL1 (RAB3IL1 Products)
Background:	Guanine nucleotide exchange factor (GEF) for Rab3A, a GTPase that regulates synaptic vesicle

Target Details

exocytosis (By similarity).Synonyms: GRAB, Guanine nucleotide exchange factor for Rab-3A, Rab-3A-interacting-like protein 1, Rabin3-like 1

Molecular Weight: 42637 Da

Gene ID: 5866

NCBI Accession: [NP_037533](#)

Application Details

Application Notes: Optimal working dilution should be determined by the investigator.

Restrictions: For Research Use only

Handling

Format: Liquid

Concentration: 0.25 mg/mL

Buffer: PBS, 0.09 % Sodium Azide

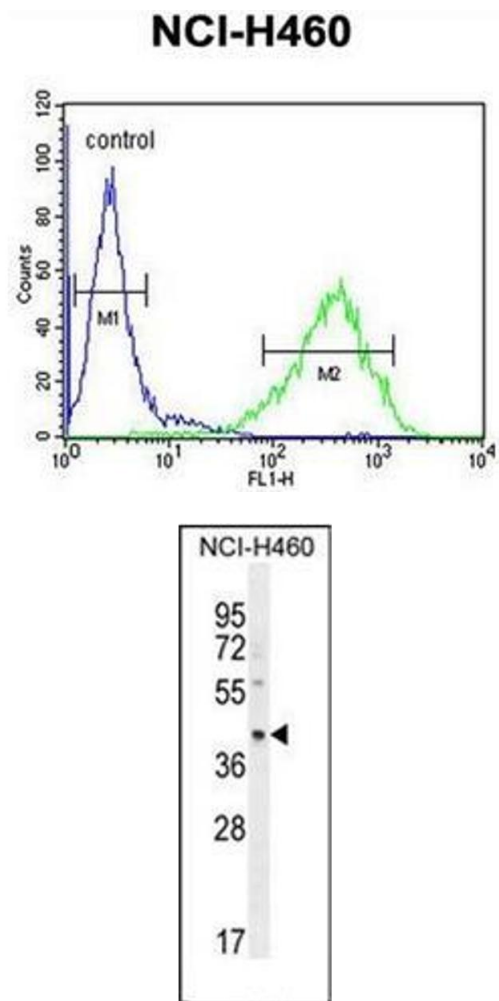
Preservative: Sodium azide

Precaution of Use: This product contains sodium azide: a POISONOUS AND HAZARDOUS SUBSTANCE which should be handled by trained staff only.

Handling Advice: Avoid repeated freezing and thawing.

Storage: 4 °C/-20 °C

Storage Comment: Store undiluted at 2-8 °C for one month or (in aliquots) at -20 °C for longer.



Flow Cytometry

Image 1. Flow cytometric analysis of NCI-H460 cells using RAB3IL1 Antibody (C-term) Cat.-No AP53546PU-N (right histogram) compared to a negative control cell (left histogram). FITC-conjugated goat-anti-rabbit secondary antibodies were used for the analysis.

Western Blotting

Image 2. Western blot analysis of RAB3IL1 Antibody (C-term) in NCI-H460 cell line lysates (35ug/lane). This demonstrates the RAB3IL1 antibody detected the RAB3IL1 protein (arrow).