

Datasheet for ABIN954418
anti-RAB41 antibody (C-Term)



[Go to Product page](#)

1 Image

Overview

Quantity:	0.4 mL
Target:	RAB41
Binding Specificity:	AA 136-165, C-Term
Reactivity:	Human
Host:	Rabbit
Clonality:	Polyclonal
Conjugate:	This RAB41 antibody is un-conjugated
Application:	Western Blotting (WB), Enzyme Immunoassay (EIA)

Product Details

Immunogen:	KLH conjugated synthetic peptide between 136-165 amino acids from the C-terminal region of Human RAB41.
Isotype:	Ig Fraction
Specificity:	This antibody recognizes Human RAB41 (C-term).
Purification:	Affinity Chromatography on Protein A

Target Details

Target:	RAB41
Alternative Name:	RAB41 (RAB41 Products)
Background:	This gene encodes a small GTP-binding protein that belongs to the largest family within the Ras

Target Details

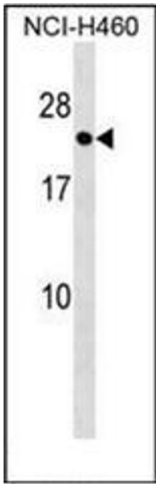
	superfamily. These proteins function as regulators of membrane trafficking. They cycle between inactive GDP-bound and activated GTP-bound states, which is controlled by GTP hydrolysis-activating proteins (GAPs). This family member can be activated by the GAP protein RN-Tre, and it is localized to the Golgi complex.Synonyms: Rab-41, Ras-related protein Rab-41
Molecular Weight:	25038 Da
Gene ID:	347517
NCBI Accession:	NP_001027898

Application Details

Application Notes:	Optimal working dilution should be determined by the investigator.
Restrictions:	For Research Use only

Handling

Format:	Liquid
Concentration:	0.25 mg/mL
Buffer:	PBS, 0.09 % Sodium Azide
Preservative:	Sodium azide
Precaution of Use:	This product contains sodium azide: a POISONOUS AND HAZARDOUS SUBSTANCE which should be handled by trained staff only.
Handling Advice:	Avoid repeated freezing and thawing.
Storage:	4 °C/-20 °C
Storage Comment:	Store undiluted at 2-8 °C for one month or (in aliquots) at -20 °C for longer.



Western Blotting

Image 1. Western blot analysis of RAB41 Antibody (C-term) in NCI-H460 cell line lysates (35ug/lane). This demonstrates the RAB41 antibody detected the RAB41 protein (arrow).