



[Go to Product page](#)

Datasheet for ABIN954422

anti-RABGAP1 antibody (N-Term)

2 Images

Overview

Quantity:	0.4 mL
Target:	RABGAP1
Binding Specificity:	AA 21-51, N-Term
Reactivity:	Human
Host:	Rabbit
Clonality:	Polyclonal
Conjugate:	This RABGAP1 antibody is un-conjugated
Application:	Western Blotting (WB), Flow Cytometry (FACS), Enzyme Immunoassay (EIA)

Product Details

Immunogen:	KLH conjugated synthetic peptide between 21-51 amino acids from the N-terminal region of Human RABGAP1. Genename: RABGAP1
Isotype:	Ig Fraction
Specificity:	This antibody recognizes Human RABGAP1 (N-term).
Purification:	Affinity Chromatography on Protein A

Target Details

Target:	RABGAP1
Alternative Name:	RABGAP1 (RABGAP1 Products)
Background:	RABGAP1 may act as a GTPase-activating protein of RAB6A and play a role in microtubule

Target Details

nucleation by centrosome. It may participate in a RAB6A-mediated pathway involved in the metaphase-anaphase transition. Synonyms: GAP and centrosome-associated protein, GAPCENA, HSPC094, Rab GTPase-activating protein 1, Rab6 GTPase-activating protein GAPCenA

Molecular Weight: 121737 Da

Gene ID: 23637

NCBI Accession: [NP_036329](#)

Application Details

Application Notes: Optimal working dilution should be determined by the investigator.

Restrictions: For Research Use only

Handling

Format: Liquid

Concentration: 0.25 mg/mL

Buffer: PBS, 0.09 % Sodium Azide

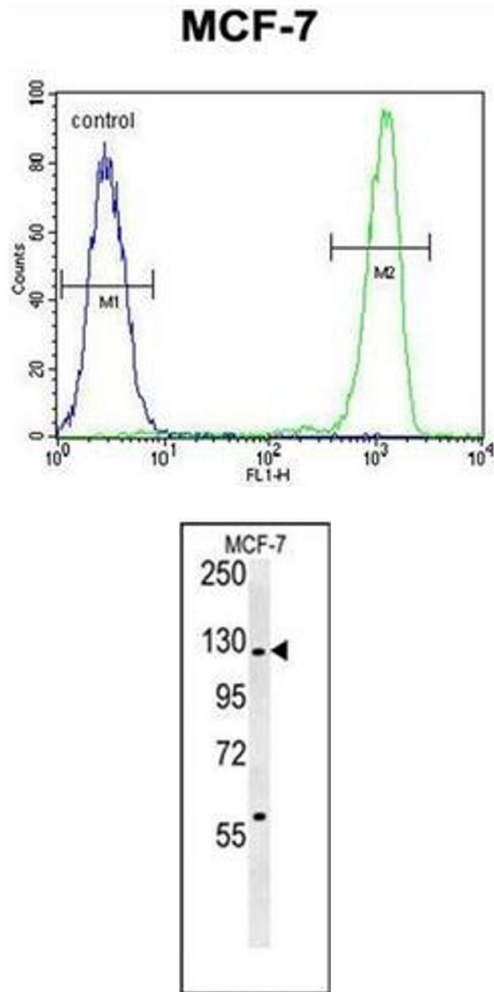
Preservative: Sodium azide

Precaution of Use: This product contains sodium azide: a POISONOUS AND HAZARDOUS SUBSTANCE which should be handled by trained staff only.

Handling Advice: Avoid repeated freezing and thawing.

Storage: 4 °C/-20 °C

Storage Comment: Store undiluted at 2-8 °C for one month or (in aliquots) at -20 °C for longer.



Flow Cytometry

Image 1. Flow cytometric analysis of MCF-7 cells using RABGAP1 Antibody (N-term) Cat.-No AP53552PU-N (right histogram) compared to a negative control cell (left histogram). FITC-conjugated goat-anti-rabbit secondary antibodies were used for the analysis.

Western Blotting

Image 2. Western blot analysis of RABGAP1 Antibody (N-term) in MCF-7 cell line lysates (35ug/lane). This demonstrates the RABGAP1 antibody detected the RABGAP1 protein (arrow).