

Datasheet for ABIN954453

anti-RAP1GDS1 antibody (Middle Region)[Go to Product page](#)**2** Images

Overview

Quantity:	0.4 mL
Target:	RAP1GDS1
Binding Specificity:	AA 224-252, Middle Region
Reactivity:	Human
Host:	Rabbit
Clonality:	Polyclonal
Conjugate:	This RAP1GDS1 antibody is un-conjugated
Application:	Western Blotting (WB), Immunohistochemistry (Paraffin-embedded Sections) (IHC (p)), Enzyme Immunoassay (EIA)

Product Details

Immunogen:	KLH conjugated synthetic peptide between 224-252 amino acids from the Central region of Human RAP1GDS1 Genename: RAP1GDS1
Isotype:	Ig Fraction
Specificity:	This antibody recognizes Human RAP1GDS1 (Center).
Purification:	Protein A column, followed by peptide affinity purification

Target Details

Target:	RAP1GDS1
Alternative Name:	RAP1GDS1 (RAP1GDS1 Products)

Target Details

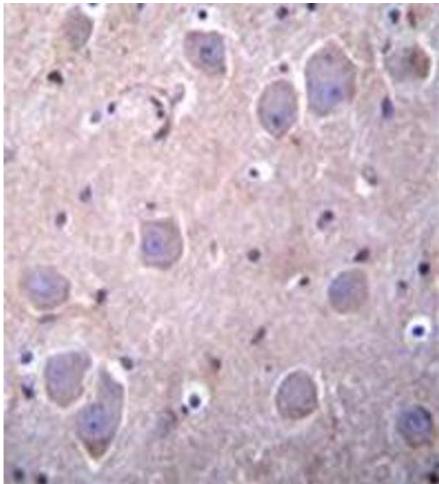
Background:	The smg GDP dissociation stimulator (smgGDS) protein is a stimulatory GDP/GTP exchange protein with GTPase activity (Riess et al., 1993 [PubMed 8262526]).Synonyms: Exchange factor smgGDS, Rap1 GTPase-GDP dissociation stimulator 1, SMG GDS protein, SMG P21 stimulatory GDP/GTP exchange protein
Molecular Weight:	66317 Da
Gene ID:	5910
NCBI Accession:	NP_001093896
Pathways:	SARS-CoV-2 Protein Interactome

Application Details

Application Notes:	Optimal working dilution should be determined by the investigator.
Restrictions:	For Research Use only

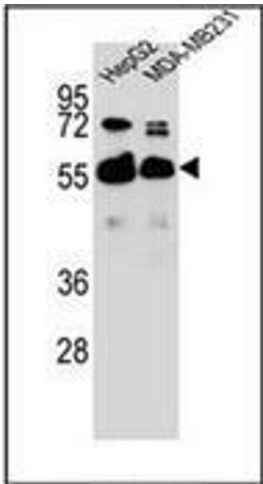
Handling

Format:	Liquid
Concentration:	0.25 mg/mL
Buffer:	PBS, 0.09 % Sodium Azide
Preservative:	Sodium azide
Precaution of Use:	This product contains sodium azide: a POISONOUS AND HAZARDOUS SUBSTANCE which should be handled by trained staff only.
Handling Advice:	Avoid repeated freezing and thawing.
Storage:	4 °C/-20 °C
Storage Comment:	Store undiluted at 2-8 °C for one month or (in aliquots) at -20 °C for longer.



Immunohistochemistry (Paraffin-embedded Sections)

Image 1. Formalin fixed, paraffin embedded human brain tissue stained with RAP1GDS1 Antibody followed by peroxidase conjugation of the secondary antibody and DAB staining.



Western Blotting

Image 2. Western blot analysis of RAP1GDS1 Antibody in HepG2,MDA-MB231 cell line lysates (35ug/lane). This demonstrates the RAP1GDS1 antibody detected the RAP1GDS1 protein (arrow