



Datasheet for ABIN954465
anti-RASSF10 antibody (Middle Region)



[Go to Product page](#)

2 Images

Overview

Quantity:	0.4 mL
Target:	RASSF10
Binding Specificity:	AA 229-259, Middle Region
Reactivity:	Human, Mouse
Host:	Rabbit
Clonality:	Polyclonal
Conjugate:	This RASSF10 antibody is un-conjugated
Application:	Western Blotting (WB), Immunohistochemistry (Paraffin-embedded Sections) (IHC (p)), Enzyme Immunoassay (EIA)

Product Details

Immunogen:	KLH conjugated synthetic peptide between 229-259 amino acids from the Central region of Human RASSF10. Genename: RASSF10
Isotype:	Ig Fraction
Specificity:	This antibody recognizes Human and Mouse RASSF10 (Center).
Purification:	Affinity Chromatography on Protein A

Target Details

Target:	RASSF10
Alternative Name:	RASSF10 (RASSF10 Products)

Target Details

Background:	Synonyms: Ras association domain-containing protein 10
Molecular Weight:	56900 Da
Gene ID:	644943
NCBI Accession:	NP_001073990

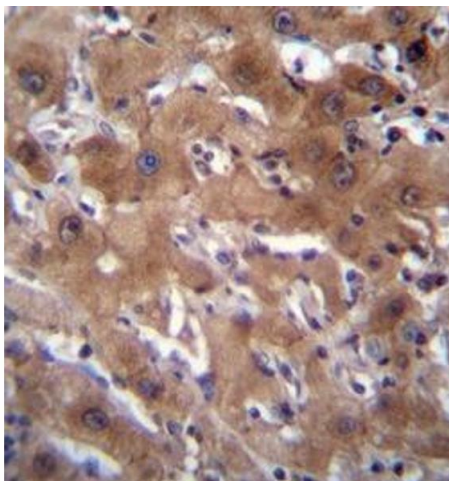
Application Details

Application Notes:	Optimal working dilution should be determined by the investigator.
Restrictions:	For Research Use only

Handling

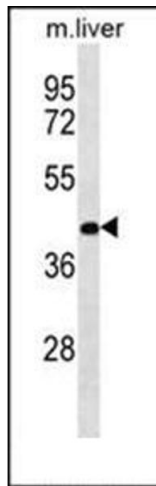
Format:	Liquid
Concentration:	0.25 mg/mL
Buffer:	PBS, 0.09 % Sodium Azide
Preservative:	Sodium azide
Precaution of Use:	This product contains sodium azide: a POISONOUS AND HAZARDOUS SUBSTANCE which should be handled by trained staff only.
Handling Advice:	Avoid repeated freezing and thawing.
Storage:	4 °C/-20 °C
Storage Comment:	Store undiluted at 2-8 °C for one month or (in aliquots) at -20 °C for longer.

Images



Immunohistochemistry (Paraffin-embedded Sections)

Image 1. Formalin fixed, paraffin embedded human liver tissue stained with RASSF10 Antibody followed by peroxidase conjugation of the secondary antibody and DAB staining.



Western Blotting

Image 2. Western blot analysis of RASSF10 Antibody in Mouse liver tissue lysates (35ug/lane). This demonstrates the RASSF10 antibody detected the RASSF10 protein (arrow).