

Datasheet for ABIN954472
anti-RBBP7 antibody (Middle Region)



[Go to Product page](#)

2 Images

Overview

Quantity:	0.4 mL
Target:	RBBP7
Binding Specificity:	AA 190-219, Middle Region
Reactivity:	Human
Host:	Rabbit
Clonality:	Polyclonal
Conjugate:	This RBBP7 antibody is un-conjugated
Application:	Western Blotting (WB), Enzyme Immunoassay (EIA)

Product Details

Immunogen:	KLH conjugated synthetic peptide between 190-219 amino acids from the Central region of Human RBBP7. Genename: RBBP7
Isotype:	Ig Fraction
Specificity:	This antibody recognizes Human RBBP7 (Center).
Purification:	Affinity Chromatography on Protein A

Target Details

Target:	RBBP7
Alternative Name:	RBBP7 / RBAP46 (RBBP7 Products)
Background:	This protein is a ubiquitously expressed nuclear protein and belongs to a highly conserved

Target Details

subfamily of WD-repeat proteins. It is found among several proteins that binds directly to retinoblastoma protein, which regulates cell proliferation. The encoded protein is found in many histone deacetylase complexes, including mSin3 co-repressor complex. It is also present in protein complexes involved in chromatin assembly. This protein can interact with BRCA1 tumor-suppressor gene and may have a role in the regulation of cell proliferation and differentiation. Two transcript variants encoding different isoforms have been found for this gene. Synonyms: Histone-binding protein RBBP7, Nucleosome-remodeling factor subunit RBAP46, RBBP-7, Retinoblastoma-binding protein 7, Retinoblastoma-binding protein p46

Molecular Weight: 47820 Da

Gene ID: 5931

NCBI Accession: [NP_002884](#)

Application Details

Application Notes: Optimal working dilution should be determined by the investigator.

Restrictions: For Research Use only

Handling

Format: Liquid

Concentration: 0.25 mg/mL

Buffer: PBS, 0.09 % Sodium Azide

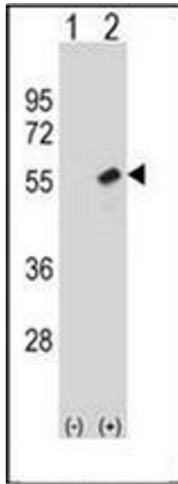
Preservative: Sodium azide

Precaution of Use: This product contains sodium azide: a POISONOUS AND HAZARDOUS SUBSTANCE which should be handled by trained staff only.

Handling Advice: Avoid repeated freezing and thawing.

Storage: 4 °C/-20 °C

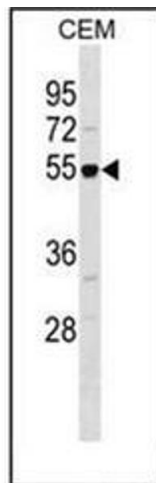
Storage Comment: Store undiluted at 2-8 °C for one month or (in aliquots) at -20 °C for longer.



Western Blotting

Image 1. Western blot analysis of RBBP7 (arrow) using RBBP7 / RBAP46 Antibody .

293 cell lysates (2 ug/lane) either nontransfected (Lane 1) or transiently transfected (Lane 2) with the RBBP7 gene.



Western Blotting

Image 2. Western blot analysis of RBBP7 / RBAP46 Antibody in CEM cell line lysates (35ug/lane). This demonstrates the RBBP7 antibody detected the RBBP7 protein (arrow).