

Datasheet for ABIN954474

anti-RBM10 antibody (N-Term)[Go to Product page](#)

1 Image

1 Publication

Overview

Quantity:	0.4 mL
Target:	RBM10
Binding Specificity:	AA 84-113, N-Term
Reactivity:	Human
Host:	Rabbit
Clonality:	Polyclonal
Conjugate:	This RBM10 antibody is un-conjugated
Application:	Western Blotting (WB), Enzyme Immunoassay (EIA)

Product Details

Immunogen:	KLH conjugated synthetic peptide between 84-113 amino acids from the N-terminal region of Human RBM10. Genename: RBM10
Isotype:	Ig Fraction
Specificity:	This antibody recognizes Human RBM10 (N-term).
Purification:	Affinity Chromatography on Protein A

Target Details

Target:	RBM10
Alternative Name:	RBM10 (RBM10 Products)
Background:	The protein encoded by this gene contains RNA recognition motif found in a variety of RNA

Target Details

binding proteins, including various hnRNP proteins, proteins implicated in regulation of alternative splicing, and protein components of snRNPs. In vitro studies showed that the rat homolog bound to RNA homopolymers, with a preference for G and U polyribonucleotides. This gene is part of a gene cluster on chromosome Xp11.23, and its 3' end lies within 20 kb upstream of UBE1. Two transcript variants encoding different isoforms have been identified for this gene. Synonyms: DXS8237E, G patch domain-containing protein 9, GPATC9, GPATCH9, KIAA0122, RNA-binding motif protein 10, RNA-binding protein 10, RNA-binding protein S1-1

Molecular Weight: 103533 Da

Gene ID: 8241

NCBI Accession: [NP_001191395](#)

Application Details

Application Notes: Optimal working dilution should be determined by the investigator.

Restrictions: For Research Use only

Handling

Format: Liquid

Concentration: 0.25 mg/mL

Buffer: PBS, 0.09 % Sodium Azide

Preservative: Sodium azide

Precaution of Use: This product contains sodium azide: a POISONOUS AND HAZARDOUS SUBSTANCE which should be handled by trained staff only.

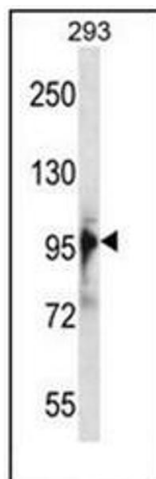
Handling Advice: Avoid repeated freezing and thawing.

Storage: 4 °C/-20 °C

Storage Comment: Store undiluted at 2-8 °C for one month or (in aliquots) at -20 °C for longer.

Publications

Product cited in: Dephoure, Zhou, Villén, Beausoleil, Bakalarski, Elledge, Gygi: "A quantitative atlas of mitotic phosphorylation." in: **Proceedings of the National Academy of Sciences of the United States of America**, Vol. 105, Issue 31, pp. 10762-7, (2008) ([PubMed](#)).



Western Blotting

Image 1. Western blot analysis of RBM10 Antibody (N-term) in 293 cell line lysates (35ug/lane). This demonstrates the RBM10 antibody detected the RBM10 protein (arrow).