

Datasheet for ABIN954475
anti-RBM12 antibody (Middle Region)[Go to Product page](#)

2 Images

Overview

Quantity:	0.4 mL
Target:	RBM12
Binding Specificity:	AA 574-603, Middle Region
Reactivity:	Human, Mouse
Host:	Rabbit
Clonality:	Polyclonal
Conjugate:	This RBM12 antibody is un-conjugated
Application:	Western Blotting (WB), Enzyme Immunoassay (EIA)

Product Details

Immunogen:	KLH conjugated synthetic peptide between 574-603 amino acids from the Central region of Human RBM12. Genename: RBM12
Isotype:	Ig Fraction
Specificity:	This antibody recognizes Human and Mouse RBM12 (Center).
Purification:	Affinity Chromatography on Protein A

Target Details

Target:	RBM12
Alternative Name:	RBM12 (RBM12 Products)
Background:	This gene encodes a protein that contains several RNA-binding motifs, potential

Target Details

transmembrane domains, and proline-rich regions. This gene and the gene for copine I overlap at map location 20q11.21. Alternative splicing in the 5' UTR results in four transcript variants. All variants encode the same protein. Synonyms: KIAA0765, RNA-binding motif protein 12, RNA-binding protein 12, SH3/WW domain anchor protein in the nucleus, SWAN

Molecular Weight: 97395 Da

Gene ID: 10137

NCBI Accession: [NP_001185767](#)

Application Details

Application Notes: Optimal working dilution should be determined by the investigator.

Restrictions: For Research Use only

Handling

Format: Liquid

Concentration: 0.25 mg/mL

Buffer: PBS, 0.09 % Sodium Azide

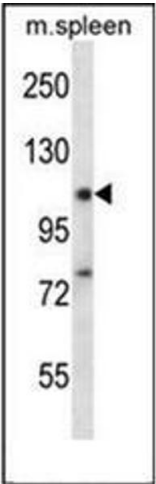
Preservative: Sodium azide

Precaution of Use: This product contains sodium azide: a POISONOUS AND HAZARDOUS SUBSTANCE which should be handled by trained staff only.

Handling Advice: Avoid repeated freezing and thawing.

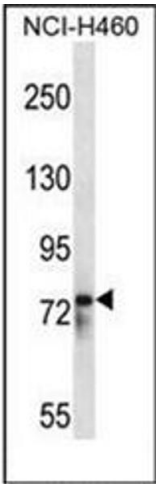
Storage: 4 °C/-20 °C

Storage Comment: Store undiluted at 2-8 °C for one month or (in aliquots) at -20 °C for longer.



Western Blotting

Image 1. Western blot analysis of RBM12 Antibody in Mouse spleen tissue lysates (35ug/lane). This demonstrates the RBM12 antibody detected the RBM12 protein (arrow).



Western Blotting

Image 2. Western blot analysis of RBM12 Antibody in NCI-H460 cell line lysates (35ug/lane). This demonstrates the RBM12 antibody detected the RBM12 protein (arrow).