

Datasheet for ABIN954476
anti-RBM14 antibody (C-Term)[Go to Product page](#)

2 Images

Overview

Quantity:	0.4 mL
Target:	RBM14
Binding Specificity:	AA 570-602, C-Term
Reactivity:	Human
Host:	Rabbit
Clonality:	Polyclonal
Conjugate:	This RBM14 antibody is un-conjugated
Application:	Western Blotting (WB), Enzyme Immunoassay (EIA)

Product Details

Immunogen:	KLH conjugated synthetic peptide between 570-602 amino acids from the C-terminal region of Human RBM14 Genename: RBM14
Isotype:	Ig Fraction
Specificity:	This antibody recognizes Human RBM14 (C-term).
Purification:	Affinity Chromatography on Protein A

Target Details

Target:	RBM14
Alternative Name:	RBM14 (RBM14 Products)
Background:	Isoform 1 may function as a nuclear receptor coactivator, enhancing transcription through

Target Details

other coactivators such as NCOA6 and CITED1. Isoform 2, functions as a transcriptional repressor, modulating transcriptional activities of coactivators including isoform 1, NCOA6 and CITED1. Synonyms: PSP2, Paraspeckle protein 2, RNA-binding motif protein 14, RNA-binding protein 14, RRM-containing coactivator activator/modulator, SIP, SYT-interacting protein, Synaptotagmin-interacting protein

Molecular Weight: 69492 Da

Gene ID: 10432

NCBI Accession: [NP_001185765](#)

Pathways: [Intracellular Steroid Hormone Receptor Signaling Pathway](#)

Application Details

Application Notes: Optimal working dilution should be determined by the investigator.

Restrictions: For Research Use only

Handling

Format: Liquid

Concentration: 0.25 mg/mL

Buffer: PBS, 0.09 % Sodium Azide

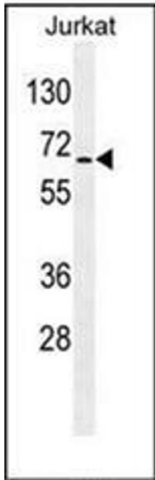
Preservative: Sodium azide

Precaution of Use: This product contains sodium azide: a POISONOUS AND HAZARDOUS SUBSTANCE which should be handled by trained staff only.

Handling Advice: Avoid repeated freezing and thawing.

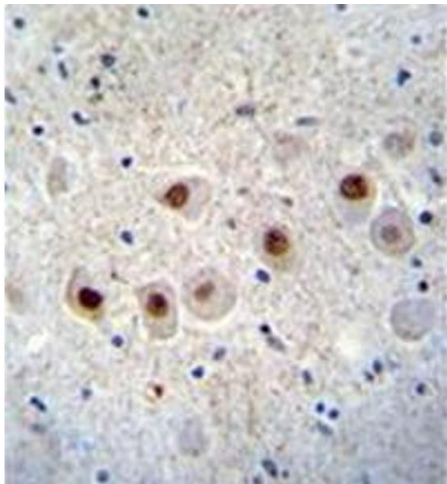
Storage: 4 °C/-20 °C

Storage Comment: Store undiluted at 2-8 °C for one month or (in aliquots) at -20 °C for longer.



Western Blotting

Image 1. Western blot analysis of RBM14 Antibody (C-term) in Jurkat cell line lysates (35ug/lane). This demonstrates the RBM14 antibody detected the RBM14 protein (arrow).



Immunohistochemistry (Paraffin-embedded Sections)

Image 2. Formalin fixed and paraffin embedded human brain tissue stained with RBM14 Antibody (C-term) followed by peroxidase conjugation of the secondary antibody and DAB staining.