

Datasheet for ABIN954481
anti-RBM42 antibody (C-Term)[Go to Product page](#)

2 Images

Overview

Quantity:	0.4 mL
Target:	RBM42
Binding Specificity:	AA 393-422, C-Term
Reactivity:	Human
Host:	Rabbit
Clonality:	Polyclonal
Conjugate:	This RBM42 antibody is un-conjugated
Application:	Western Blotting (WB), Enzyme Immunoassay (EIA)

Product Details

Immunogen:	KLH conjugated synthetic peptide between 393-422 amino acids from the C-terminal region of Human RBM42. Genename: RBM42
Isotype:	Ig Fraction
Specificity:	This antibody recognizes Human RBM42 (C-term).
Purification:	Affinity Chromatography on Protein A

Target Details

Target:	RBM42
Alternative Name:	RBM42 (RBM42 Products)
Background:	RBM42 binds (via the RRM domain) to the 3'-untranslated region (UTR) of CDKN1A mRNA (By

Target Details

similarity).Synonyms: RNA-binding motif protein 42, RNA-binding protein 42

Molecular Weight: 50414 Da

Gene ID: 79171

NCBI Accession: [NP_077297](#)

Application Details

Application Notes: Optimal working dilution should be determined by the investigator.

Restrictions: For Research Use only

Handling

Format: Liquid

Concentration: 0.25 mg/mL

Buffer: PBS, 0.09 % Sodium Azide

Preservative: Sodium azide

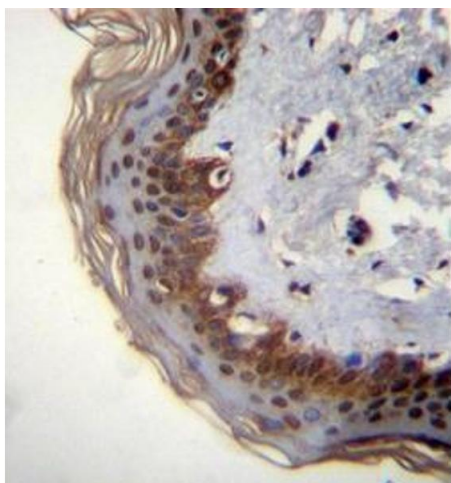
Precaution of Use: This product contains sodium azide: a POISONOUS AND HAZARDOUS SUBSTANCE which should be handled by trained staff only.

Handling Advice: Avoid repeated freezing and thawing.

Storage: 4 °C/-20 °C

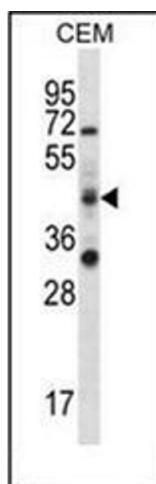
Storage Comment: Store undiluted at 2-8 °C for one month or (in aliquots) at -20 °C for longer.

Images



Immunohistochemistry (Paraffin-embedded Sections)

Image 1. Formalin fixed, paraffin embedded human skin tissue stained with RBM42 Antibody (C-term) followed by peroxidase conjugation of the secondary antibody and DAB staining. This data demonstrates the use of RBM42 Antibody (C-term) for immunohistochemistry. Clinical relevance has not been evaluated.



Western Blotting

Image 2. Western blot analysis of RBM42 Antibody (C-term) in CEM cell line lysates (35ug/lane). This demonstrates the RBM42 antibody detected the RBM42 protein (arrow).