



Datasheet for ABIN954482
anti-RBM43 antibody (N-Term)



[Go to Product page](#)

3 Images

Overview

Quantity:	0.4 mL
Target:	RBM43
Binding Specificity:	AA 28-57, N-Term
Reactivity:	Human
Host:	Rabbit
Clonality:	Polyclonal
Conjugate:	This RBM43 antibody is un-conjugated
Application:	Western Blotting (WB), Flow Cytometry (FACS), Immunohistochemistry (Paraffin-embedded Sections) (IHC (p)), Enzyme Immunoassay (EIA)

Product Details

Immunogen:	KLH conjugated synthetic peptide between 28-57 amino acids from the N-terminal region of Human RBM43. Genename: RBM43
Isotype:	Ig Fraction
Specificity:	This antibody recognizes Human RBM43 (N-term).
Purification:	Affinity Chromatography on Protein A

Target Details

Target:	RBM43
Alternative Name:	RBM43 (RBM43 Products)

Target Details

Background:	Synonyms: C2orf38, RNA-binding motif protein 43, RNA-binding protein 43
Molecular Weight:	40666 Da
Gene ID:	375287
NCBI Accession:	NP_940959

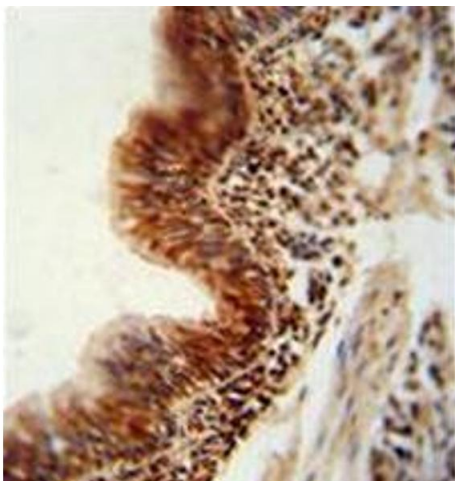
Application Details

Application Notes:	Optimal working dilution should be determined by the investigator.
Restrictions:	For Research Use only

Handling

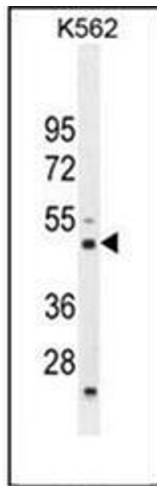
Format:	Liquid
Concentration:	0.25 mg/mL
Buffer:	PBS, 0.09 % Sodium Azide
Preservative:	Sodium azide
Precaution of Use:	This product contains sodium azide: a POISONOUS AND HAZARDOUS SUBSTANCE which should be handled by trained staff only.
Handling Advice:	Avoid repeated freezing and thawing.
Storage:	4 °C/-20 °C
Storage Comment:	Store undiluted at 2-8 °C for one month or (in aliquots) at -20 °C for longer.

Images



Immunohistochemistry (Paraffin-embedded Sections)

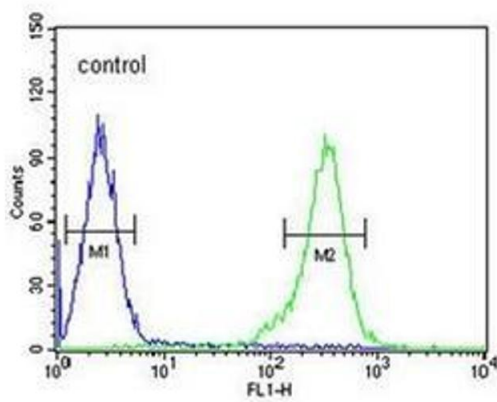
Image 1. Formalin fixed, paraffin embedded human lung carcinoma stained with RBM43 antibody (N-term) followed by peroxidase conjugation of the secondary antibody and DAB staining. This data demonstrates the use of the RBM43 antibody (N-term) for immunohistochemistry. Clinical relevance has not been evaluated.



Western Blotting

Image 2. Western blot analysis of RBM43 antibody (N-term) in K562 cell line lysates (35ug/lane). This demonstrates the Cat. #M43 antibody detected the RBM43 protein (arrow).

K562



Flow Cytometry

Image 3. Flow cytometric analysis of K562 cells using RBM43 antibody (N-term) Cat.No AP53611PU-N (right histogram) compared to a negative control cell (left histogram). FITC-conjugated goat-anti-rabbit secondary antibodies were used for the analysis.