



[Go to Product page](#)

Datasheet for ABIN954487
anti-RBMX2 antibody (C-Term)

2 Images

Overview

Quantity:	0.4 mL
Target:	RBMX2
Binding Specificity:	AA 245-265, C-Term
Reactivity:	Human
Host:	Rabbit
Clonality:	Polyclonal
Conjugate:	This RBMX2 antibody is un-conjugated
Application:	Western Blotting (WB), Immunohistochemistry (Paraffin-embedded Sections) (IHC (p)), Enzyme Immunoassay (EIA)

Product Details

Immunogen:	KLH conjugated synthetic peptide between 245-265 amino acids from the C-terminal region of Human RBMX2. Genename: RBMX2
Isotype:	Ig Fraction
Specificity:	This antibody recognizes Human RBMX2 (C-term).
Purification:	Affinity Chromatography on Protein A

Target Details

Target:	RBMX2
Alternative Name:	RBMX2 (RBMX2 Products)

Target Details

Background:	Synonyms: CGI-79, RNA-binding motif protein X-linked 2
Molecular Weight:	37336 Da
Gene ID:	51634
NCBI Accession:	NP_057108

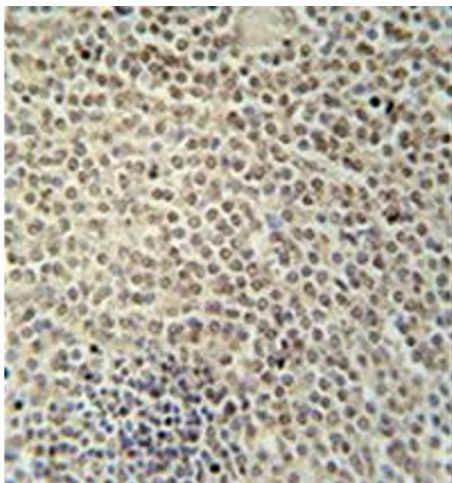
Application Details

Application Notes:	Optimal working dilution should be determined by the investigator.
Restrictions:	For Research Use only

Handling

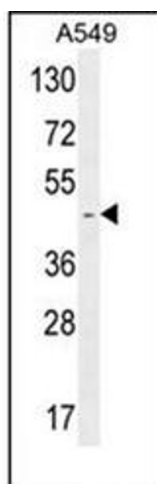
Format:	Liquid
Concentration:	0.25 mg/mL
Buffer:	PBS, 0.09 % Sodium Azide
Preservative:	Sodium azide
Precaution of Use:	This product contains sodium azide: a POISONOUS AND HAZARDOUS SUBSTANCE which should be handled by trained staff only.
Handling Advice:	Avoid repeated freezing and thawing.
Storage:	4 °C/-20 °C
Storage Comment:	Store undiluted at 2-8 °C for one month or (in aliquots) at -20 °C for longer.

Validation report #100923 for Western Blotting (WB)



Immunohistochemistry (Paraffin-embedded Sections)

Image 1. Formalin fixed, paraffin embedded human spleen tissue stained with RBMX2 Antibody (C-term) followed by peroxidase conjugation of the secondary antibody and DAB staining.



Western Blotting

Image 2. Western blot analysis of RBMX2 Antibody (C-term) in A549 cell line lysates (35ug/lane). This demonstrates the Cat. #MX2 antibody detected the RBMX2 protein (arrow).