

Datasheet for ABIN954488  
**anti-RBPJL antibody (N-Term)**[Go to Product page](#)

## 2 Images

## Overview

Quantity:	0.4 mL
Target:	RBPJL
Binding Specificity:	AA 15-44, N-Term
Reactivity:	Human
Host:	Rabbit
Clonality:	Polyclonal
Conjugate:	This RBPJL antibody is un-conjugated
Application:	Western Blotting (WB), Immunohistochemistry (Paraffin-embedded Sections) (IHC (p)), Enzyme Immunoassay (EIA)

## Product Details

Immunogen:	KLH conjugated synthetic peptide between 15-44 amino acids from the N-terminal region of human RBPJL Genename: RBPJL
Isotype:	Ig Fraction
Specificity:	This antibody recognizes Human RBPJL (N-term).
Purification:	Protein A column, followed by peptide affinity purification

## Target Details

Target:	RBPJL
Alternative Name:	RBPJL ( <a href="#">RBPJL Products</a> )

## Target Details

**Background:** In mouse, recombining binding protein L (RBP-L) is a transcription factor that binds to DNA sequences almost identical to that bound by the Notch receptor signalling pathway transcription factor RBP-J. However, unlike RBP-J, RBP-L does not interact with Notch receptors. RBP-L has been shown to activate transcription in concert with Epstein-Barr virus nuclear antigen-2 (EBNA2). The protein encoded by this gene is similar in sequence to the mouse RPB-L protein and Drosophila suppressor of hairless protein. Synonyms: RBPL, RBPSUHL, Recombining binding protein suppressor of hairless-like protein, Transcription factor RBP-L

**Molecular Weight:** 56751 Da

**Gene ID:** 11317

**NCBI Accession:** [NP\\_055091](#)

## Application Details

**Application Notes:** Optimal working dilution should be determined by the investigator.

**Restrictions:** For Research Use only

## Handling

**Format:** Liquid

**Concentration:** 0.25 mg/mL

**Buffer:** PBS, 0.09 % (W/V) Sodium Azide

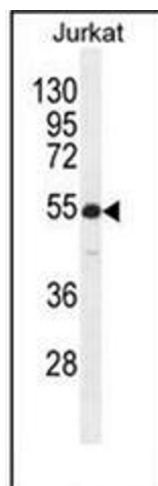
**Preservative:** Sodium azide

**Precaution of Use:** This product contains sodium azide: a POISONOUS AND HAZARDOUS SUBSTANCE which should be handled by trained staff only.

**Handling Advice:** Avoid repeated freezing and thawing.

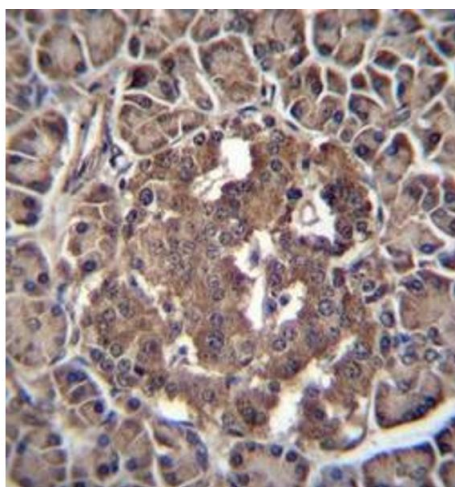
**Storage:** 4 °C/-20 °C

**Storage Comment:** Store undiluted at 2-8 °C for one month or (in aliquots) at -20 °C for longer.



#### Western Blotting

**Image 1.** Western blot analysis of RBPJL Antibody (N-term) in Jurkat cell line lysates (35ug/lane). This demonstrates the RBPJL antibody detected the RBPJL protein (arrow).



#### Immunohistochemistry (Paraffin-embedded Sections)

**Image 2.** Formalin fixed and paraffin embedded human pancreas tissue reacted with RBPJL Antibody (N-term) followed by peroxidase conjugation of the secondary antibody and DAB staining.