

Datasheet for ABIN954489

anti-RBPMS2 antibody (Middle Region)**2** Images[Go to Product page](#)

Overview

Quantity:	0.4 mL
Target:	RBPMS2
Binding Specificity:	AA 120-149, Middle Region
Reactivity:	Mouse, Human
Host:	Rabbit
Clonality:	Polyclonal
Conjugate:	This RBPMS2 antibody is un-conjugated
Application:	Western Blotting (WB), Immunohistochemistry (Paraffin-embedded Sections) (IHC (p)), Enzyme Immunoassay (EIA)

Product Details

Immunogen:	KLH conjugated synthetic peptide between 120-149 amino acids from the Central region of Human RBPMS2. Genename: RBPMS2
Isotype:	Ig Fraction
Specificity:	This antibody recognizes Human and Mouse RBPMS2 (Center).
Purification:	Affinity Chromatography on Protein A

Target Details

Target:	RBPMS2
Alternative Name:	RBPMS2 (RBPMS2 Products)

Target Details

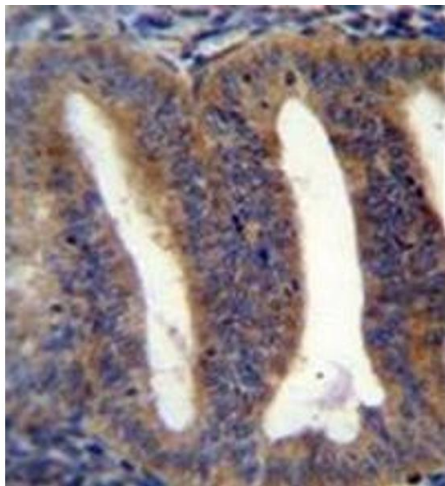
Background:	RBPM2 contains one RRM (RNA recognition motif) domain. The exact function of RBPM2 remains unknown.Synonyms: RNA-binding protein with multiple splicing 2
Molecular Weight:	22497 Da
Gene ID:	348093
NCBI Accession:	NP_919248

Application Details

Application Notes:	Optimal working dilution should be determined by the investigator.
Restrictions:	For Research Use only

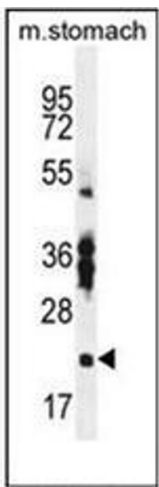
Handling

Format:	Liquid
Concentration:	0.25 mg/mL
Buffer:	PBS, 0.09 % Sodium Azide
Preservative:	Sodium azide
Precaution of Use:	This product contains sodium azide: a POISONOUS AND HAZARDOUS SUBSTANCE which should be handled by trained staff only.
Handling Advice:	Avoid repeated freezing and thawing.
Storage:	4 °C/-20 °C
Storage Comment:	Store undiluted at 2-8 °C for one month or (in aliquots) at -20 °C for longer.



Immunohistochemistry (Paraffin-embedded Sections)

Image 1. Formalin fixed, paraffin embedded human uterus tissue stained with RBPMS2 Antibody followed by peroxidase conjugation of the secondary antibody and DAB staining.



Western Blotting

Image 2. Western blot analysis of RBPMS2 Antibody in Mouse stomach tissue lysates (35ug/lane). This demonstrates the RBPMS2 antibody detected the RBPMS2 protein (arrow).