

Datasheet for ABIN954494

**anti-SDR16C5 antibody (Middle Region)**[Go to Product page](#)**1** Image

## Overview

Quantity:	0.4 mL
Target:	SDR16C5 (RDHE2)
Binding Specificity:	AA 122-151, Middle Region
Reactivity:	Human
Host:	Rabbit
Clonality:	Polyclonal
Conjugate:	This SDR16C5 antibody is un-conjugated
Application:	Western Blotting (WB), Enzyme Immunoassay (EIA)

## Product Details

Immunogen:	KLH conjugated synthetic peptide between 122-151 amino acids from the Central region of Human SDR16C5. Genename: SDR16C5
Isotype:	Ig Fraction
Specificity:	Recognizes SDR16C5 (Center).
Purification:	Protein A column followed by peptide Affinity purification

## Target Details

Target:	SDR16C5 (RDHE2)
Alternative Name:	RDHE2 / SDR16C5 ( <a href="#">RDHE2 Products</a> )
Background:	RDHE2 belongs to a family of short-chain alcohol dehydrogenases/reductases that catalyze the

## Target Details

first and rate-limiting step that generates retinaldehyde from retinol (Matsuzaka et al., 2002 [PubMed 12372410]).Synonyms: EPHD-2, Epidermal retinol dehydrogenase 2, RDH-E2, Retinal short-chain dehydrogenase reductase 2, Short-chain dehydrogenase/reductase family 16C member 5, retSDR2

Gene ID: 195814

NCBI Accession: [NP\\_620419](#)

## Application Details

Application Notes: Optimal working dilution should be determined by the investigator.

Restrictions: For Research Use only

## Handling

Format: Liquid

Concentration: 0.25 mg/mL

Buffer: PBS with 0.09 % (W/V) Sodium Azide as preservative

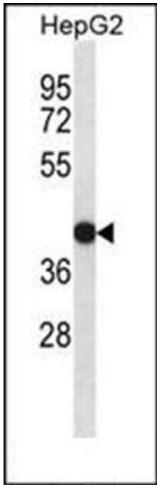
Preservative: Sodium azide

Precaution of Use: This product contains sodium azide: a POISONOUS AND HAZARDOUS SUBSTANCE which should be handled by trained staff only.

Handling Advice: Avoid repeated freezing and thawing.

Storage: 4 °C/-20 °C

Storage Comment: Store the antibody undiluted at 2-8 °C for one month or (in aliquots) at -20 °C for longer.



Western Blotting

**Image 1.** Western blot analysis of SDR16C5 Antibody (Center) Cat.-No AP53825PU-N in HepG2 cell line lysates (35ug/lane). This demonstrates the SDR16C5 antibody detected the SDR16C5 protein (arrow).