

Datasheet for ABIN954495
anti-RECK antibody (Middle Region)[Go to Product page](#)

3 Images

Overview

Quantity:	0.4 mL
Target:	RECK
Binding Specificity:	AA 436-465, Middle Region
Reactivity:	Human
Host:	Rabbit
Clonality:	Polyclonal
Conjugate:	This RECK antibody is un-conjugated
Application:	Western Blotting (WB), Flow Cytometry (FACS), Immunohistochemistry (Paraffin-embedded Sections) (IHC (p)), Enzyme Immunoassay (EIA)

Product Details

Immunogen:	KLH conjugated synthetic peptide between 436~465 amino acids from the Center region of Human RECK. Genename: RECK
Isotype:	Ig Fraction
Specificity:	This antibody recognizes Human RECK / ST15 (Center).
Purification:	Affinity Chromatography on Protein A

Target Details

Target:	RECK
Alternative Name:	RECK / ST15 (RECK Products)

Target Details

Background: RECK is a cysteine-rich, extracellular protein with protease inhibitor-like domains whose expression is suppressed strongly in many tumors and cells transformed by various kinds of oncogenes. In normal cells, this membrane-anchored glycoprotein may serve as a negative regulator for matrix metalloproteinase-9, a key enzyme involved in tumor invasion and metastasis. Synonyms: Reversion-inducing cysteine-rich protein with Kazal motifs, Suppressor of tumorigenicity 15 protein

Molecular Weight: 106457 Da

Gene ID: 8434

NCBI Accession: [NP_066934](#)

Application Details

Application Notes: Optimal working dilution should be determined by the investigator.

Restrictions: For Research Use only

Handling

Format: Liquid

Concentration: 0.25 mg/mL

Buffer: PBS, 0.09 % Sodium Azide

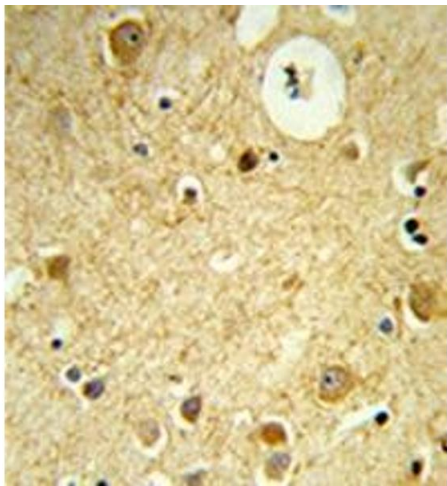
Preservative: Sodium azide

Precaution of Use: This product contains sodium azide: a POISONOUS AND HAZARDOUS SUBSTANCE which should be handled by trained staff only.

Handling Advice: Avoid repeated freezing and thawing.

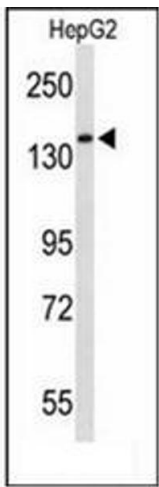
Storage: 4 °C/-20 °C

Storage Comment: Store undiluted at 2-8 °C for one month or (in aliquots) at -20 °C for longer.



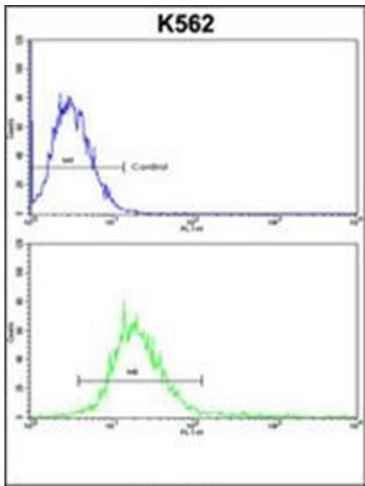
Immunohistochemistry (Paraffin-embedded Sections)

Image 1. Formalin-fixed and paraffin-embedded human brain tissue reacted with RECK / ST15 Antibody which was peroxidase-conjugated to the secondary antibody, followed by DAB staining.



Western Blotting

Image 2. Western blot analysis of RECK / ST15 Antibody in HepG2 cell line lysates (35ug/lane). RECK (arrow) was detected using the purified Pab.



Flow Cytometry

Image 3. Flow cytometric analysis of k562 cells using RECK / ST15 Antibody (bottom histogram) compared to a negative control cell (top histogram). FITC-conjugated goat-anti-rabbit secondary antibodies were used for the analysis.