

Datasheet for ABIN954505

**anti-REG3A antibody (N-Term)****2** Images[Go to Product page](#)

## Overview

Quantity:	0.4 mL
Target:	REG3A
Binding Specificity:	AA 19-48, N-Term
Reactivity:	Human
Host:	Rabbit
Clonality:	Polyclonal
Conjugate:	This REG3A antibody is un-conjugated
Application:	Western Blotting (WB), Flow Cytometry (FACS), Enzyme Immunoassay (EIA)

## Product Details

Immunogen:	KLH conjugated synthetic peptide between 19~48 amino acids from the N-terminal region of Human REG3A. Genename: REG3A
Isotype:	Ig Fraction
Specificity:	This antibody recognizes Human REG3A (N-term).
Purification:	Affinity Chromatography on Protein A

## Target Details

Target:	REG3A
Alternative Name:	REG3A ( <a href="#">REG3A Products</a> )
Background:	REG3A encodes a pancreatic secretory protein that may be involved in cell proliferation or

## Target Details

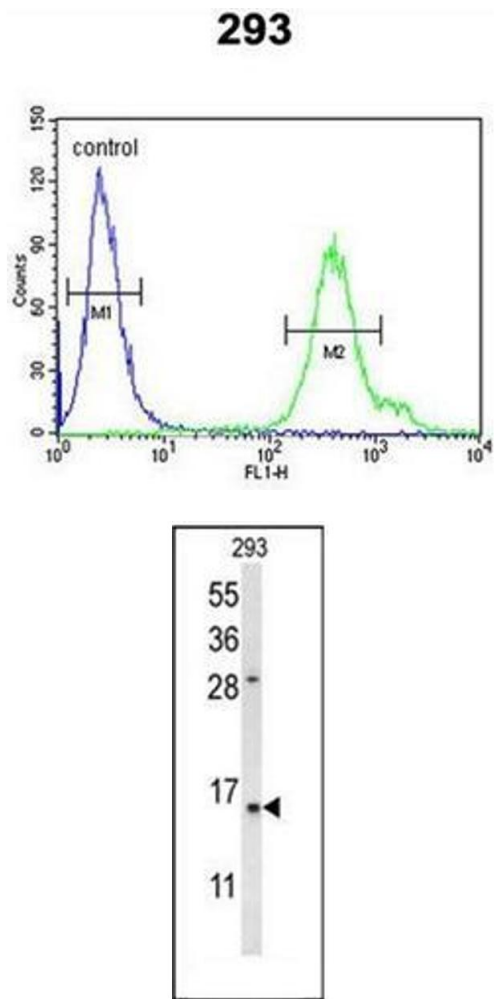
	differentiation. It has similarity to the C-type lectin superfamily. The enhanced expression of this protein is observed during pancreatic inflammation and liver carcinogenesis. Synonyms: HIP, Human proislet peptide, PAP, PAP1, Pancreatitis-associated protein 1, REG-3-alpha, Reg III-alpha, Regenerating islet-derived protein 3-alpha, Regenerating islet-derived protein III-alpha
Molecular Weight:	19395 Da
Gene ID:	5068
NCBI Accession:	<a href="#">NP_002571</a>

## Application Details

Application Notes:	Optimal working dilution should be determined by the investigator.
Restrictions:	For Research Use only

## Handling

Format:	Liquid
Concentration:	0.25 mg/mL
Buffer:	PBS, 0.09 % Sodium Azide
Preservative:	Sodium azide
Precaution of Use:	This product contains sodium azide: a POISONOUS AND HAZARDOUS SUBSTANCE which should be handled by trained staff only.
Handling Advice:	Avoid repeated freezing and thawing.
Storage:	4 °C/-20 °C
Storage Comment:	Store undiluted at 2-8 °C for one month or (in aliquots) at -20 °C for longer.



**Flow Cytometry**

**Image 1.** Flow cytometric analysis of 293 cells using REG3A Antibody (N-term) Cat.-No AP53629PU-N (right histogram) compared to a negative control cell (left histogram).FITC-conjugated goat-anti-rabbit secondary antibodies were used for the analysis.

**Western Blotting**

**Image 2.** Western blot analysis of REG3A Antibody (N-term) in 293 cell line lysates (35ug/lane). REG3A (arrow) was detected using the purified Pab.