

Datasheet for ABIN954524
anti-RFX1 antibody (C-Term)



[Go to Product page](#)

1 Image

Overview

Quantity:	0.4 mL
Target:	RFX1
Binding Specificity:	AA 895-925, C-Term
Reactivity:	Human
Host:	Rabbit
Clonality:	Polyclonal
Conjugate:	This RFX1 antibody is un-conjugated
Application:	Western Blotting (WB), Enzyme Immunoassay (EIA)

Product Details

Immunogen:	KLH conjugated synthetic peptide between 895-925 amino acids from the C-terminal region of Human RFX1. Genename: RFX1
Isotype:	Ig Fraction
Specificity:	This antibody recognizes Human RFX1 (C-term).
Purification:	Affinity Chromatography on Protein A

Target Details

Target:	RFX1
Alternative Name:	RFX1 (RFX1 Products)
Background:	This gene is a member of the regulatory factor X gene family, which encodes transcription

Target Details

factors that contain a highly-conserved winged helix DNA binding domain. The protein encoded by this gene is structurally related to regulatory factors X2, X3, X4, and X5. It is a transcriptional activator that can bind DNA as a monomer or as a heterodimer with RFX family members X2, X3, and X5, but not with X4. This protein binds to the X-boxes of MHC class II genes and is essential for their expression. Also, it can bind to an inverted repeat that is required for expression of hepatitis B virus genes. Synonyms: EF-C, Enhancer factor C, MHC class II regulatory factor RFX1, Transcription factor RFX1

Molecular Weight: 104758 Da

Gene ID: 5989

NCBI Accession: [NP_002909](#)

Pathways: [Human Leukocyte Antigen \(HLA\) in Adaptive Immune Response](#)

Application Details

Application Notes: Optimal working dilution should be determined by the investigator.

Restrictions: For Research Use only

Handling

Format: Liquid

Concentration: 0.25 mg/mL

Buffer: PBS, 0.09 % Sodium Azide

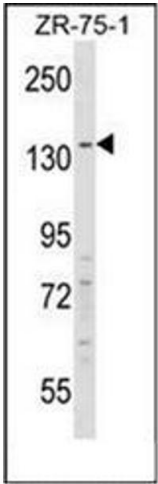
Preservative: Sodium azide

Precaution of Use: This product contains sodium azide: a POISONOUS AND HAZARDOUS SUBSTANCE which should be handled by trained staff only.

Handling Advice: Avoid repeated freezing and thawing.

Storage: 4 °C/-20 °C

Storage Comment: Store undiluted at 2-8 °C for one month or (in aliquots) at -20 °C for longer.



Western Blotting

Image 1. Western blot analysis of RFX1 Antibody (C-term) in ZR-75-1 cell line lysates (35ug/lane). This demonstrates the RFX1 antibody detected the RFX1 protein (arrow).