

Datasheet for ABIN954535
anti-RGS8 antibody (N-Term)[Go to Product page](#)

1 Image

Overview

Quantity:	0.4 mL
Target:	RGS8
Binding Specificity:	AA 13-43, N-Term
Reactivity:	Human
Host:	Rabbit
Clonality:	Polyclonal
Conjugate:	This RGS8 antibody is un-conjugated
Application:	Western Blotting (WB), Enzyme Immunoassay (EIA)

Product Details

Immunogen:	KLH conjugated synthetic peptide between 13-43 amino acids from the N-terminal region of Human RGS8. Genename: RGS8
Isotype:	Ig Fraction
Specificity:	This antibody recognizes Human RGS8 (N-term).
Purification:	Affinity Chromatography on Protein A

Target Details

Target:	RGS8
Alternative Name:	RGS8 (RGS8 Products)
Background:	RGS8 is a member of the regulator of G protein signaling (RGS) family and encodes a protein

Target Details

with a single RGS domain. Regulator of G protein signaling (RGS) proteins are regulatory and structural components of G protein-coupled receptor complexes. They accelerate transit through the cycle of GTP binding and hydrolysis to GDP, thereby terminating signal transduction, but paradoxically, also accelerate receptor-stimulated activation. Synonyms: Regulator of G-protein signaling 8

Molecular Weight: 20917 Da

Gene ID: 85397

NCBI Accession: [NP_001095920](#)

Pathways: [Regulation of G-Protein Coupled Receptor Protein Signaling](#)

Application Details

Application Notes: Optimal working dilution should be determined by the investigator.

Restrictions: For Research Use only

Handling

Format: Liquid

Concentration: 0.25 mg/mL

Buffer: PBS, 0.09 % Sodium Azide

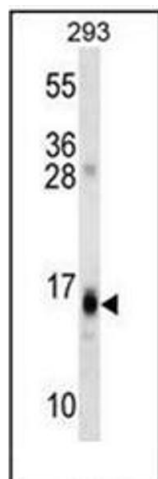
Preservative: Sodium azide

Precaution of Use: This product contains sodium azide: a POISONOUS AND HAZARDOUS SUBSTANCE which should be handled by trained staff only.

Handling Advice: Avoid repeated freezing and thawing.

Storage: 4 °C/-20 °C

Storage Comment: Store undiluted at 2-8 °C for one month or (in aliquots) at -20 °C for longer.



Western Blotting

Image 1. Western blot analysis of RGS8 Antibody (N-term) in 293 cell line lysates (35ug/lane). This demonstrates the RGS8 antibody detected the RGS8 protein (arrow).