

Datasheet for ABIN954544  
**anti-RHOJ antibody (Middle Region)**[Go to Product page](#)

## 2 Images

## Overview

Quantity:	0.4 mL
Target:	RHOJ
Binding Specificity:	Middle Region
Reactivity:	Human
Host:	Rabbit
Clonality:	Polyclonal
Conjugate:	This RHOJ antibody is un-conjugated
Application:	Western Blotting (WB), Immunohistochemistry (Paraffin-embedded Sections) (IHC (p)), Enzyme Immunoassay (EIA)

## Product Details

Isotype:	Ig Fraction
Specificity:	This antibody recognizes Human RhoJ (Center).
Purification:	Affinity Chromatography on Protein A

## Target Details

Target:	RHOJ
Alternative Name:	RhoJ ( <a href="#">RHOJ Products</a> )
Background:	ARHJ belongs to the Rho family of small GTP-binding proteins. Rho proteins regulate the dynamic assembly of cytoskeletal components for several physiologic processes, such as cell proliferation and motility and the establishment of cell polarity. They are also involved in

## Target Details

pathophysiologic process, such as cell transformation and metastasis.Synonyms: ARHJ, RASL7B, RHOI, Ras-like protein family member 7B, Rho-related GTP-binding protein RhoJ, TCL, Tc10-like GTP-binding protein

Molecular Weight: 23821 Da

Gene ID: 57381

NCBI Accession: [NP\\_065714](#)

## Application Details

Application Notes: Optimal working dilution should be determined by the investigator.

Restrictions: For Research Use only

## Handling

Format: Liquid

Concentration: 0.25 mg/mL

Buffer: PBS, 0.09 % Sodium Azide

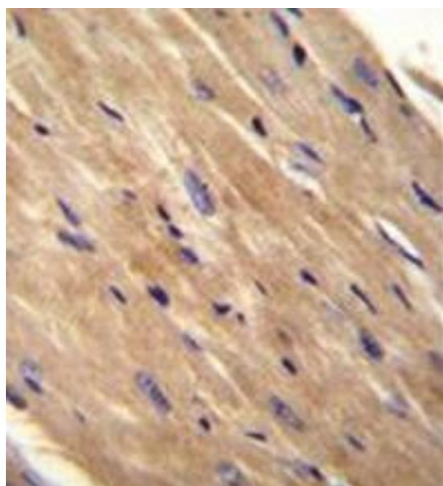
Preservative: Sodium azide

Precaution of Use: This product contains sodium azide: a POISONOUS AND HAZARDOUS SUBSTANCE which should be handled by trained staff only.

Handling Advice: Avoid repeated freezing and thawing.

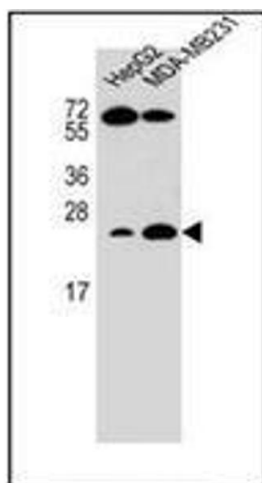
Storage: 4 °C/-20 °C

Storage Comment: Store undiluted at 2-8 °C for one month or (in aliquots) at -20 °C for longer.



#### Immunohistochemistry (Paraffin-embedded Sections)

**Image 1.** Formalin fixed, paraffin embedded Mouse heart tissue stained with RhoJ Antibody followed by peroxidase conjugation of the secondary antibody and DAB staining. This data demonstrates the use of RHOJ Antibody (Center) for immunohistochemistry. Clinical relevance has not been evaluated.



#### Western Blotting

**Image 2.** Western blot analysis of RhoJ Antibody in HepG2, MDA-MB231 cell line lysates (35ug/lane). This demonstrates the RHOJ antibody detected the RHOJ protein (arrow).