

Datasheet for ABIN954547  
**anti-RNH1 antibody (C-Term)**



[Go to Product page](#)

2 Images

## Overview

Quantity:	0.4 mL
Target:	RNH1
Binding Specificity:	AA 424-454, C-Term
Reactivity:	Human
Host:	Rabbit
Clonality:	Polyclonal
Conjugate:	This RNH1 antibody is un-conjugated
Application:	Western Blotting (WB), Immunofluorescence (IF), Enzyme Immunoassay (EIA)

## Product Details

Immunogen:	KLH conjugated synthetic peptide between 424-454 amino acids from the C-terminal region of human RNH1
Isotype:	Ig Fraction
Specificity:	This antibody reacts to RNH1.
Cross-Reactivity (Details):	Species reactivity (tested): Human.
Purification:	Affinity chromatography on Protein A

## Target Details

Target:	RNH1
Alternative Name:	Ribonuclease Inhibitor (RNH1) ( <a href="#">RNH1 Products</a> )

## Target Details

**Background:** Placental ribonuclease inhibitor (PRI) is a member of a family of proteinaceous cytoplasmic RNase inhibitors that occur in many tissues and bind to both intracellular and extracellular RNases (summarized by Lee et al., 1988 [PubMed 3219362]). In addition to control of intracellular RNases, the inhibitor may have a role in the regulation of angiogenin (MIM 105850). Ribonuclease inhibitor, of 50,000 Da, binds to ribonucleases and holds them in a latent form. Since neutral and alkaline ribonucleases probably play a critical role in the turnover of RNA in eukaryotic cells, RNH may be essential for control of mRNA turnover, the interaction of eukaryotic cells with ribonuclease may be reversible in vivo. Synonyms: PRI, Placental ribonuclease inhibitor, RAI, RNH, Ribonuclease/angiogenin inhibitor 1

**Molecular Weight:** 49973 Da

**Gene ID:** 6050

**NCBI Accession:** [NP\\_002930](#)

## Application Details

**Application Notes:** Optimal working dilution should be determined by the investigator.

**Restrictions:** For Research Use only

## Handling

**Format:** Liquid

**Concentration:** 0.25 mg/mL

**Buffer:** PBS, 0.09 % (W/V) sodium azide

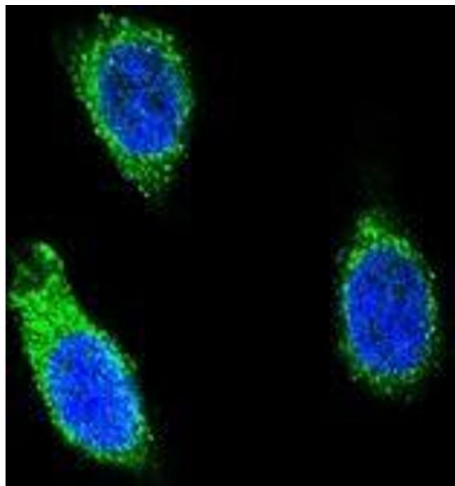
**Preservative:** Sodium azide

**Precaution of Use:** This product contains sodium azide: a POISONOUS AND HAZARDOUS SUBSTANCE which should be handled by trained staff only.

**Handling Advice:** Avoid repeated freezing and thawing.

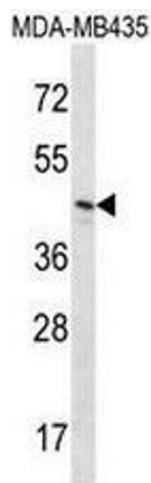
**Storage:** 4 °C/-20 °C

**Storage Comment:** Store the antibody undiluted at 2-8 °C for one month or (in aliquots) at -20 °C for longer.



#### Immunofluorescence

**Image 1.** Confocal immunofluorescent analysis of RNH1 Antibody (C-term) (Cat#AP53697PU-N) with 293 cell followed by Alexa Fluor 488-conjugated goat anti-rabbit IgG (green). DAPI was used to stain the cell nuclear (blue).



#### Western Blotting

**Image 2.** RNH1 Antibody (C-term) western blot analysis in MDA-MB435 cell line lysates (35µg/lane). This demonstrates the RNH1 antibody detected the RNH1 protein (arrow).