



[Go to Product page](#)

Datasheet for ABIN954548
anti-RIC3 antibody (C-Term)

2 Images

Overview

Quantity:	0.4 mL
Target:	RIC3
Binding Specificity:	AA 319-348, C-Term
Reactivity:	Human
Host:	Rabbit
Clonality:	Polyclonal
Conjugate:	This RIC3 antibody is un-conjugated
Application:	Western Blotting (WB), Immunohistochemistry (Paraffin-embedded Sections) (IHC (p)), Enzyme Immunoassay (EIA)

Product Details

Immunogen:	KLH conjugated synthetic peptide between 319-348 amino acids from the C-terminal region of Human RIC3 Genename: RIC3
Isotype:	Ig Fraction
Specificity:	This antibody recognizes Human RIC3 (C-term).
Purification:	Affinity Chromatography on Protein A

Target Details

Target:	RIC3
Alternative Name:	RIC3 (RIC3 Products)

Target Details

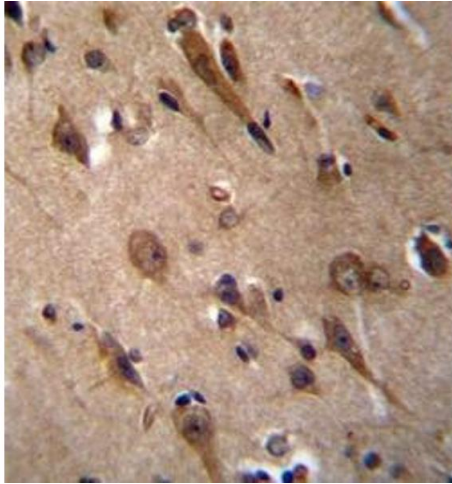
Background:	RIC3 is a protein associated with nicotinic acetylcholine receptors (nAChRs), neurotransmitter-gated ion channels expressed at the neuromuscular junction and within the central and peripheral nervous systems, that can enhance functional expression of multiple nAChR subtypes (Lansdell et al., 2005 [PubMed 16120769]).[supplied by OMIM].Synonyms: Protein RIC-3
Molecular Weight:	41092 Da
Gene ID:	79608
NCBI Accession:	NP_001128581

Application Details

Application Notes:	Optimal working dilution should be determined by the investigator.
Restrictions:	For Research Use only

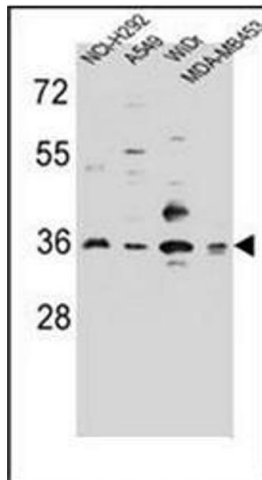
Handling

Format:	Liquid
Concentration:	0.25 mg/mL
Buffer:	PBS, 0.09 % Sodium Azide
Preservative:	Sodium azide
Precaution of Use:	This product contains sodium azide: a POISONOUS AND HAZARDOUS SUBSTANCE which should be handled by trained staff only.
Handling Advice:	Avoid repeated freezing and thawing.
Storage:	4 °C/-20 °C
Storage Comment:	Store undiluted at 2-8 °C for one month or (in aliquots) at -20 °C for longer.



Immunohistochemistry (Paraffin-embedded Sections)

Image 1. Formalin fixed, paraffin embedded human brain tissue stained with RIC3 Antibody (C-term) followed by peroxidase conjugation of the secondary antibody and DAB staining.



Western Blotting

Image 2. Western blot analysis of RIC3 Antibody (C-term) in NCI-H292, A549, WiDr, MDA-MB453 cell line lysates (35ug/lane). This demonstrates the RIC3 antibody detected the RIC3 protein (arrow).